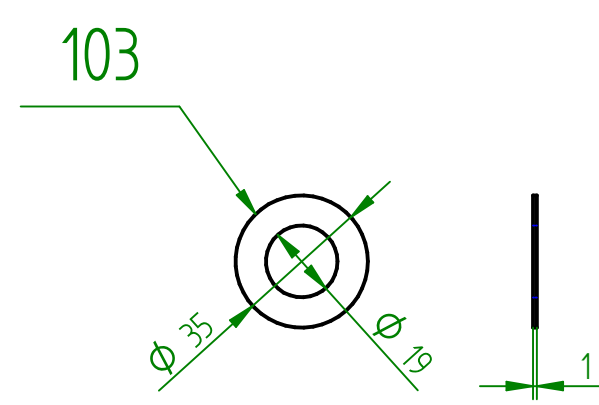
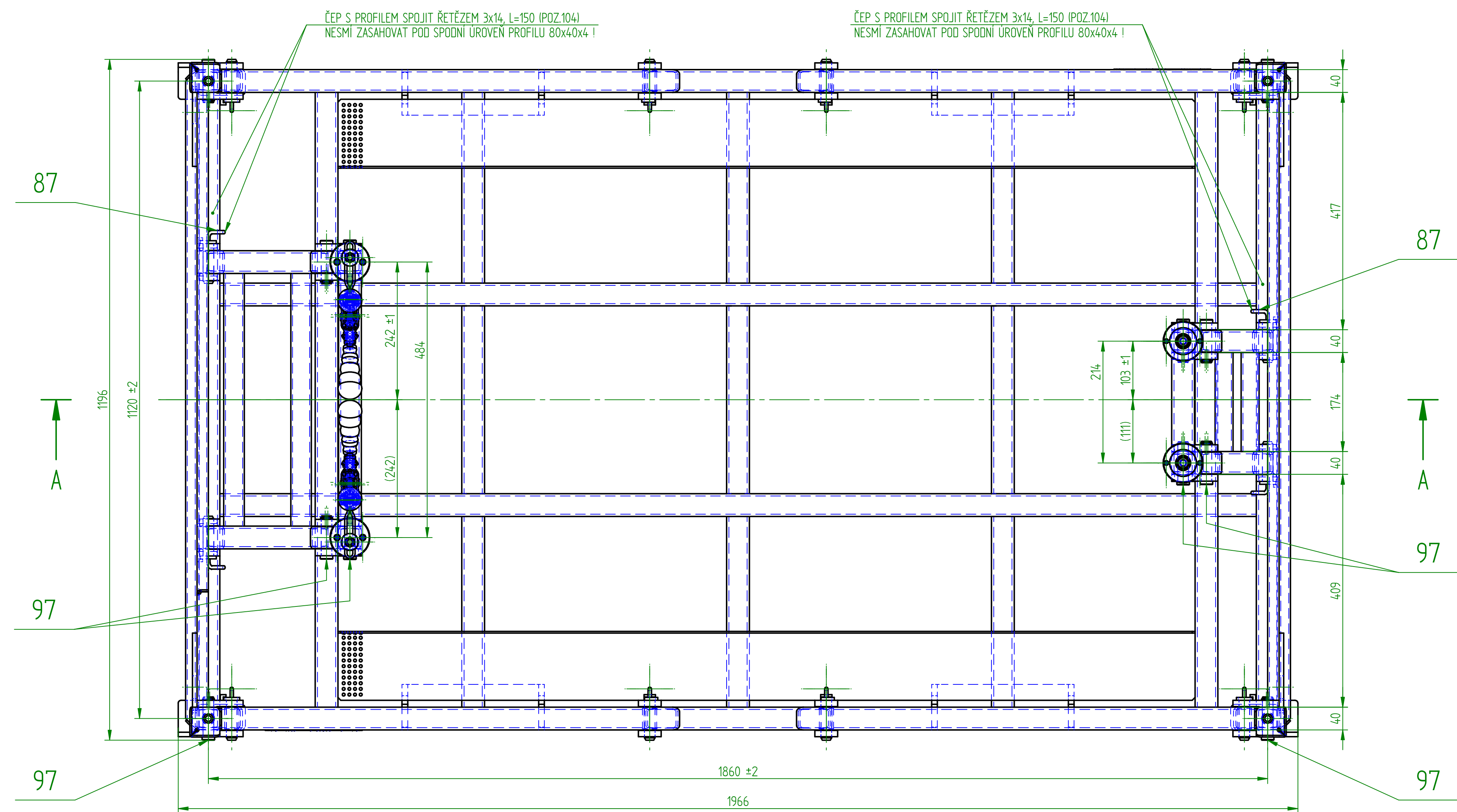
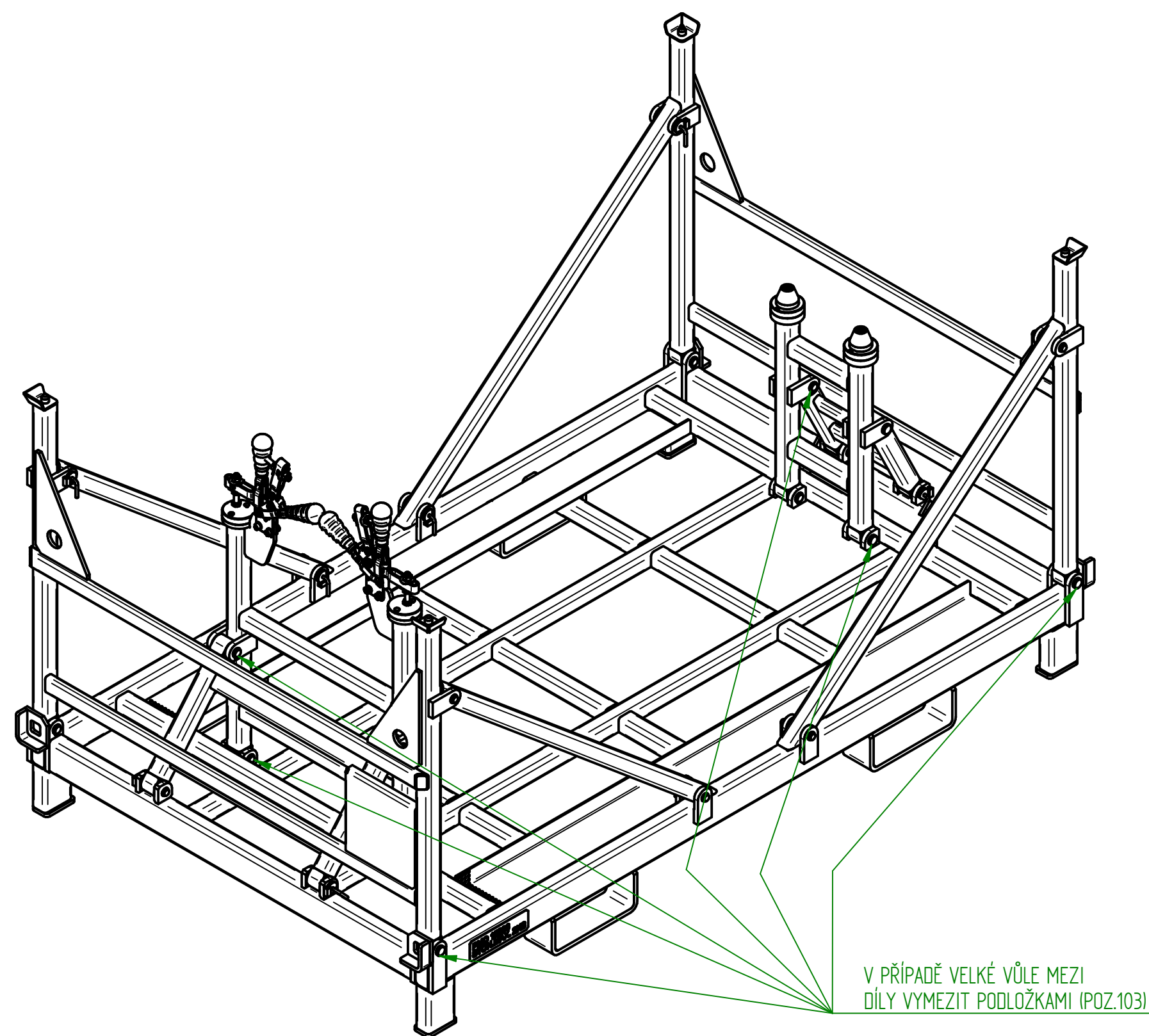
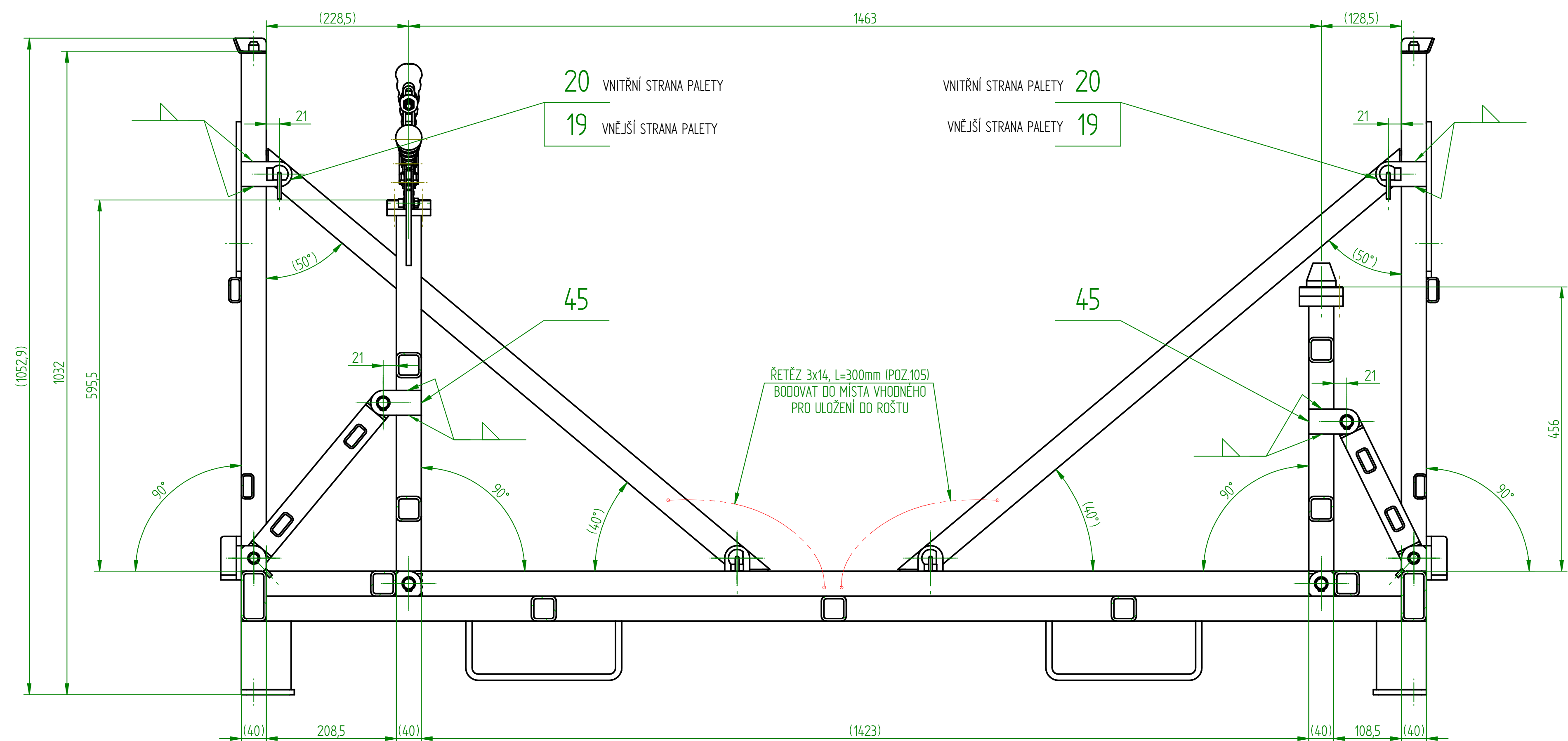


OZNAČTE: PMO 15296

OSTRE HRANY SRAZIT 1x45°
TOLERANCE SVARENCE: CSN EN ISO 13920-BF, OPRACOVANE PLOCHY: CSN ISO 2768-1-m
POZNAMKA: PRIPRAVEK NASTAVIT A ODZKOUSET NA PRVNIM KUSE !
CEPY ZINKOVAT DLE DIN 50961, PRED SLOZENIM MAZAT TUKEM !
PU: NATRIT ZAKLADNIM NATEREM S2035/0840
SVARIT 4K, 4V, PLOCHY PRO "V" SVARY UPRAVIT

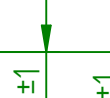
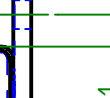
Index	Změna	Datum	Podpis	VOP CZ NOVY JICIN			
Material		Rozměr		Hmotnost v kg	205	Meritko	1:10
C. v. sestavy		Poz.		Kusovník		ODDELENY	
Vypracoval DREISEITL M.		Datum 23.7.2014		Poznámka		Starý výkres	
Kontroloval							
Schválil							
Název		PALETA		15296		Listu 2	List 1

REZ A-A

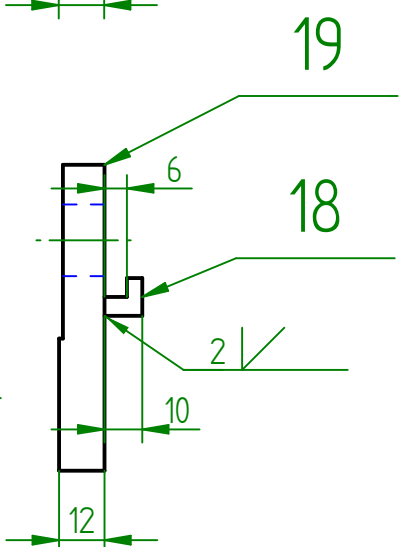
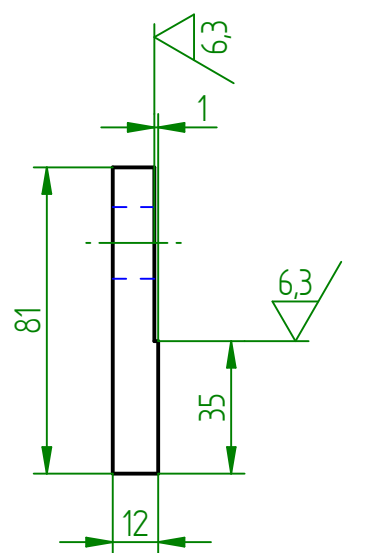
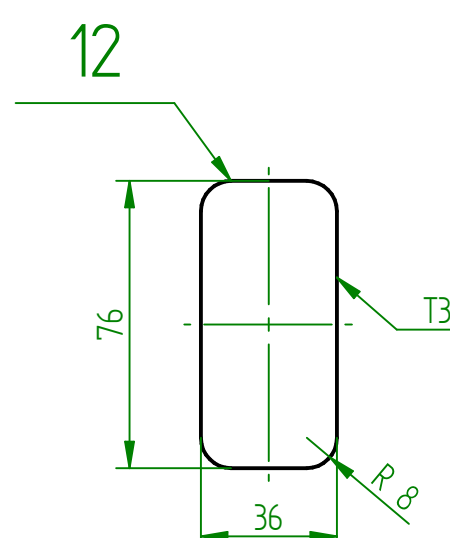
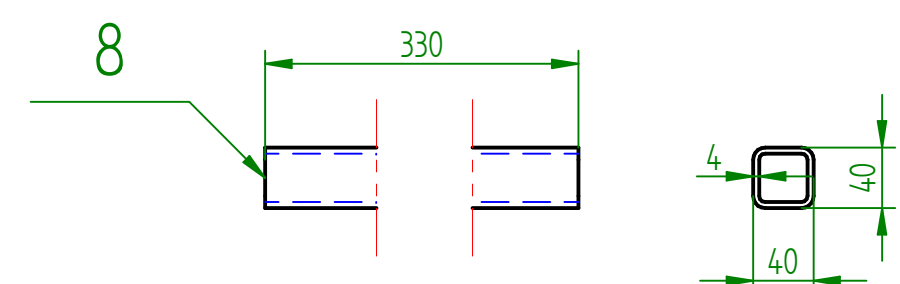


ČEPY ZINKOVAT DLE DIN 50961, PŘED SLOŽENÍM MAZAT TUKEM !
SVARIT 4K, 4V, PLOCHY PRO "V" SVARY UPRAVIT

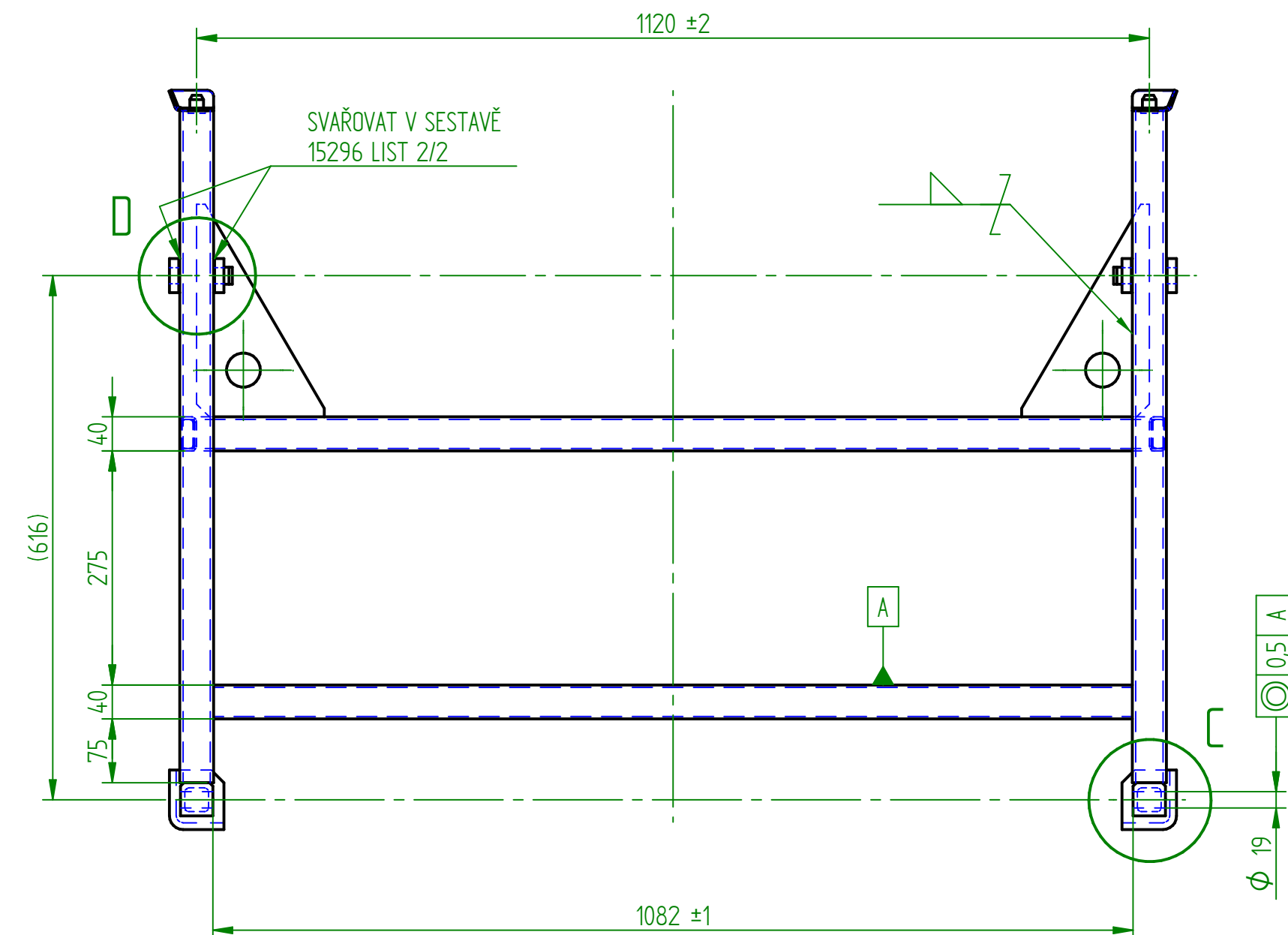
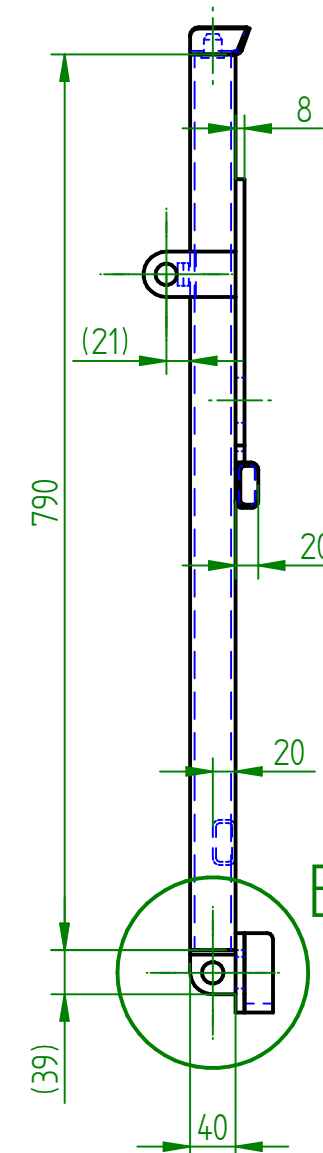
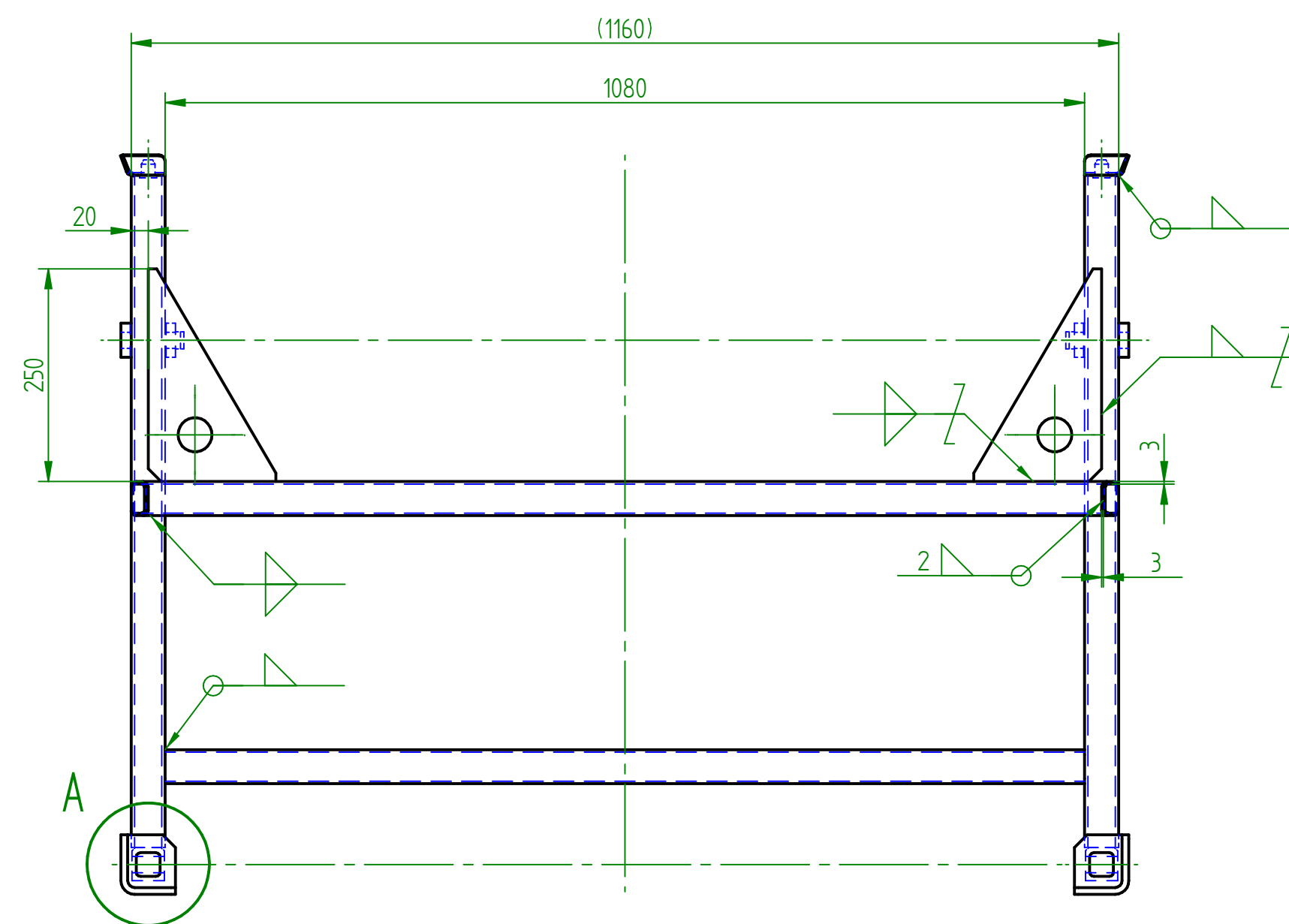
Index	Změna	Datum	Podpis	VOP CZ NOVÝ JICIN			
Material	Rozměr		Hmotnost v kg C. v. sestavy		205	Meritko	
Vypracoval	DREISEITL M.				Poz.	15	
Kontroloval						Kusovník	ODDELENÝ
Schválil	Datum		23.7.2014		Poznámka		Starý výkres
Název	PALETA		15296			Listu	2
						List	2



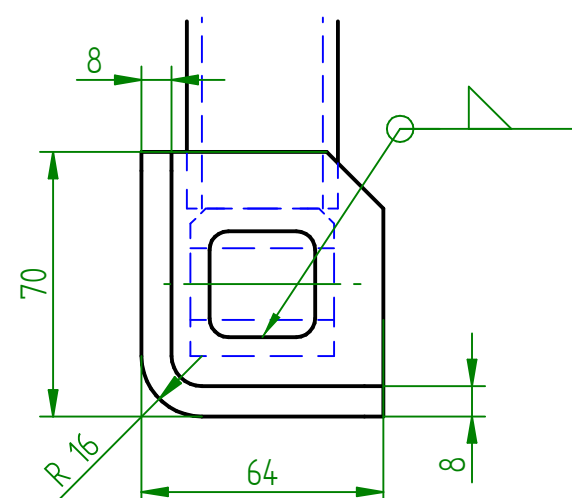
Vozba		Zvlna		Daurm		Pripad		VOP CZ NOVÝ JICIN			
Material		Roamer		Hmotnosť v kg		110		Verzika		15	
C v sestavy		15296		Poz.		1		Kusovník		00DELENY	
Výrobca		DREISLEIN		Datum		23.7.2015		Poznamka		Stary vahars	
Název		RAM		15296-01		Lisu		2		1	



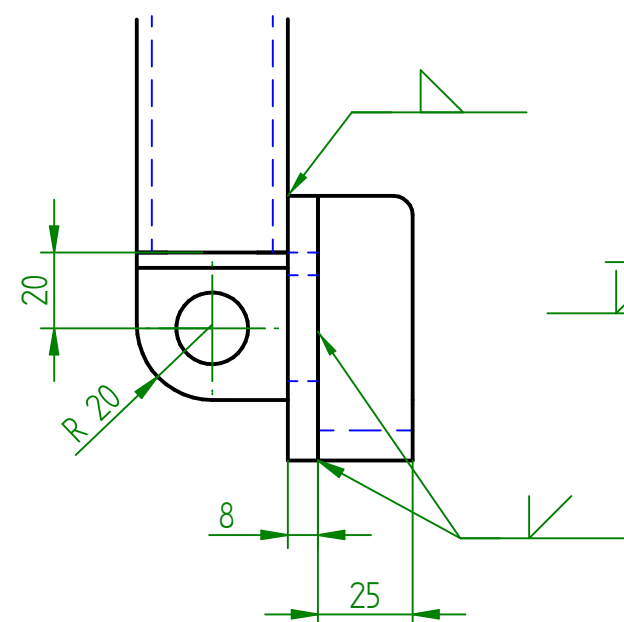
Index		Zmena		Datum		Podpis		VOP CZ NOVY JICIN			
Material			Rozmer			Hmotnost v kg 110		Meritko			
Výpracoval DREISEITL M.						C. v. sestavy 15296		Poz. 1	1.5		
						Kusovník		ODDELENY			
Kontroloval											
Schválil			Datum 23.7.2014			Poznámka		Starý výkres			
Nazev RÁM						15296-01				Listu 2	
										List 2	



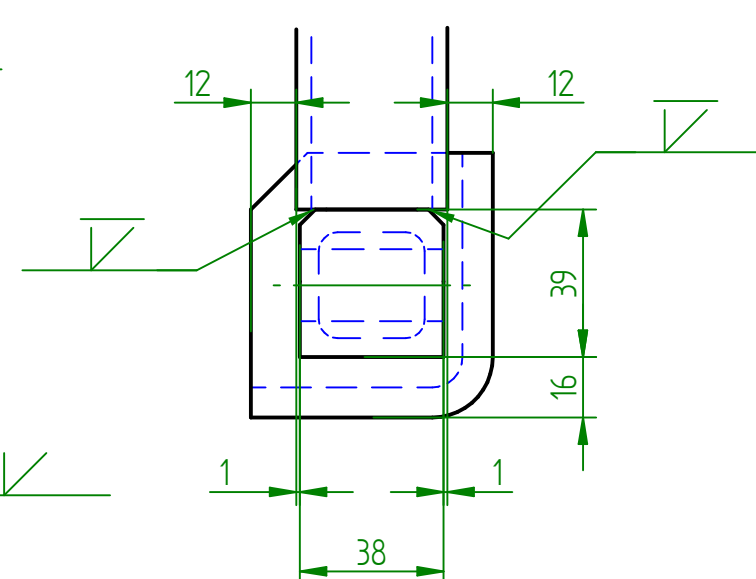
DETAIL A



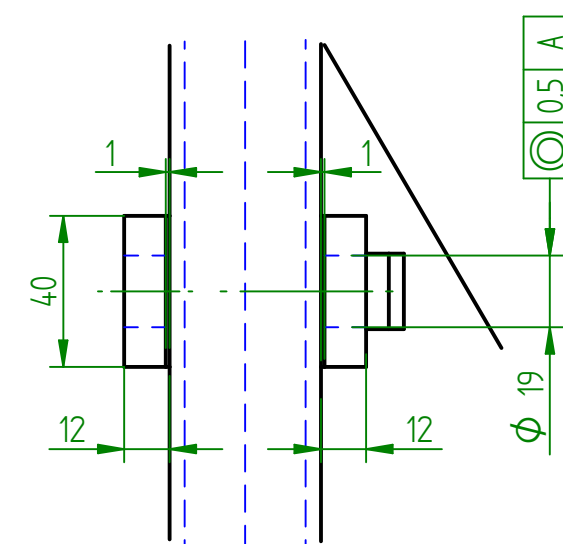
DETAIL B



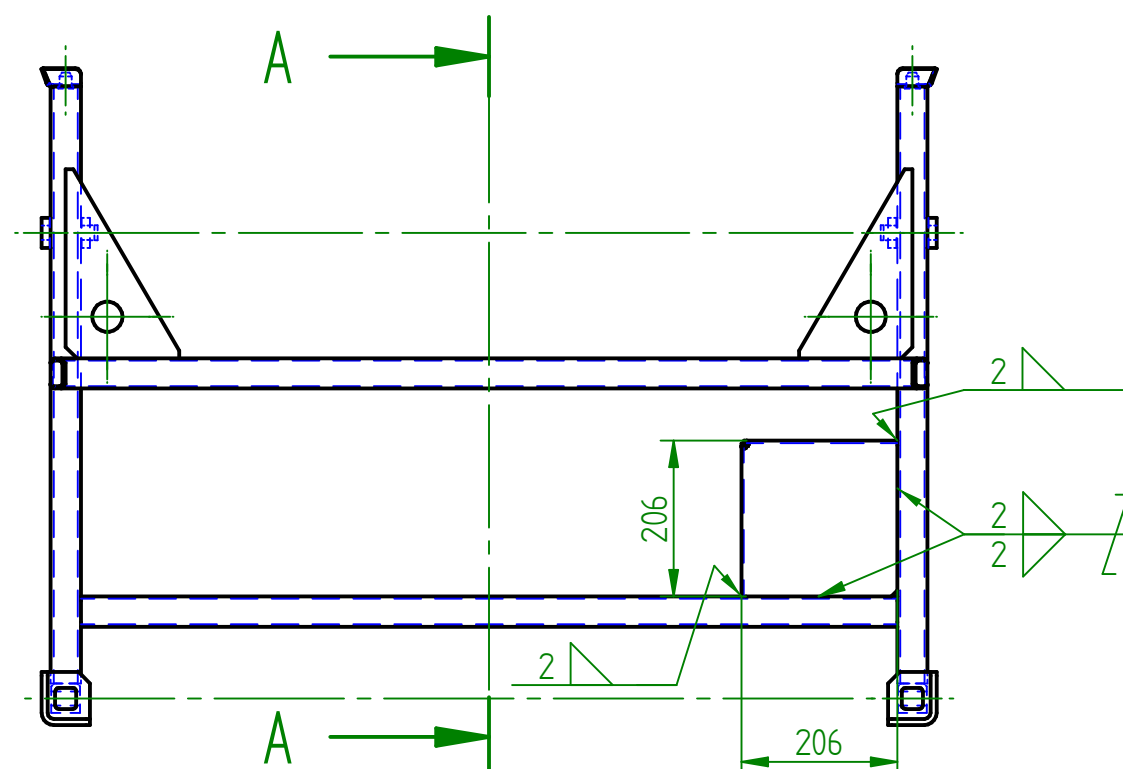
DETAIL C



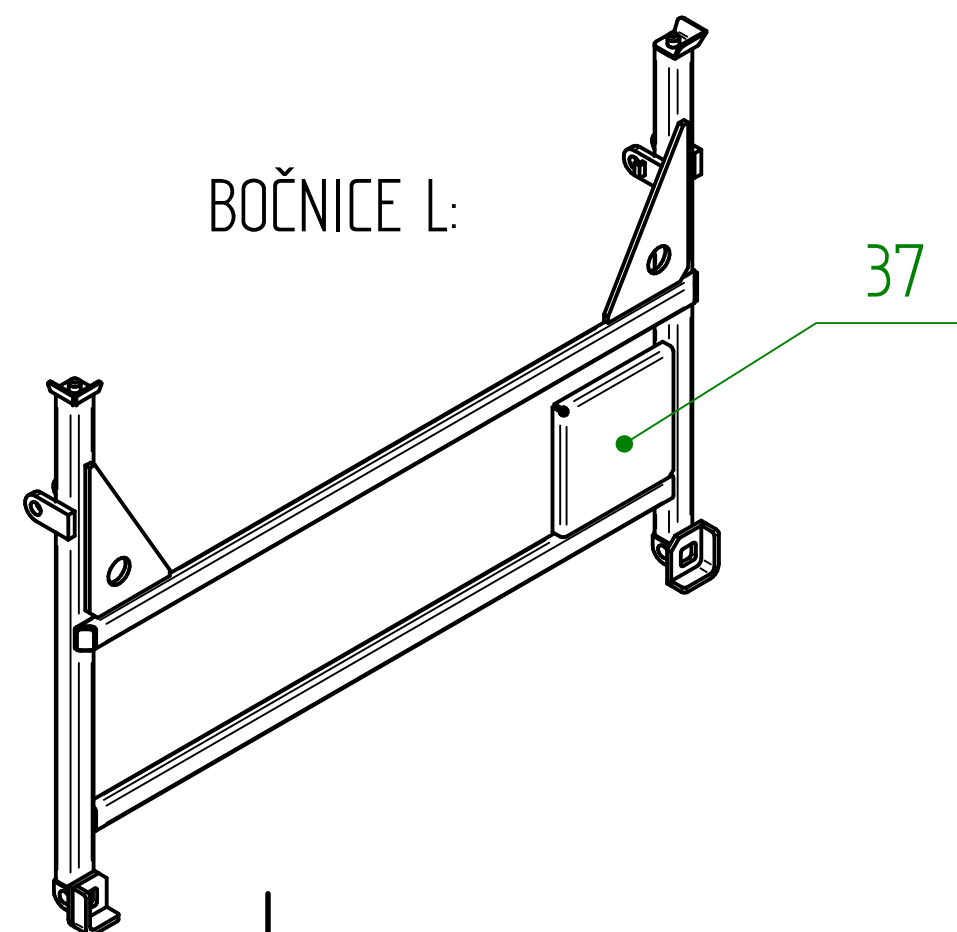
DETAIL D



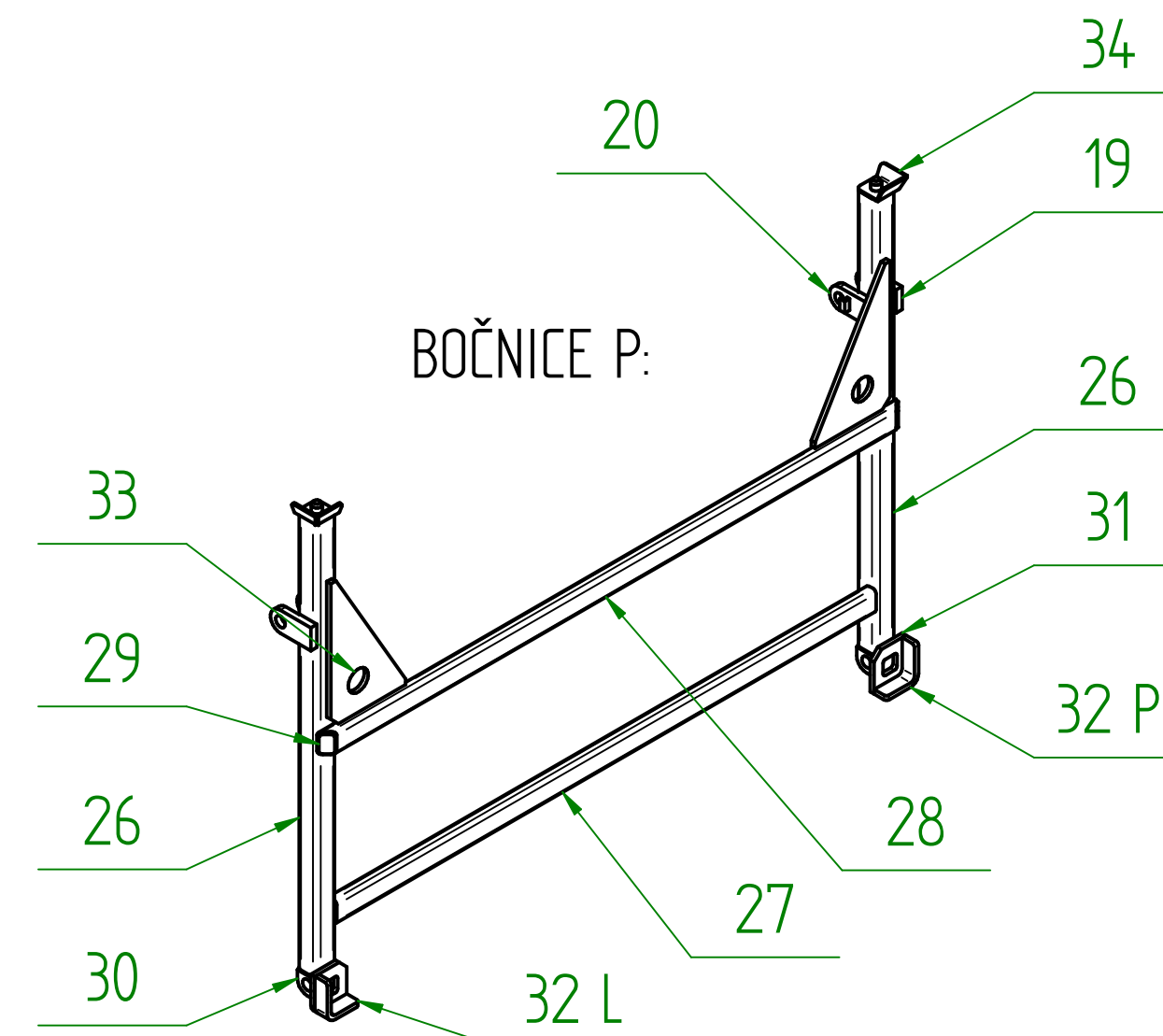
REZ A-A



BOČNICE L:

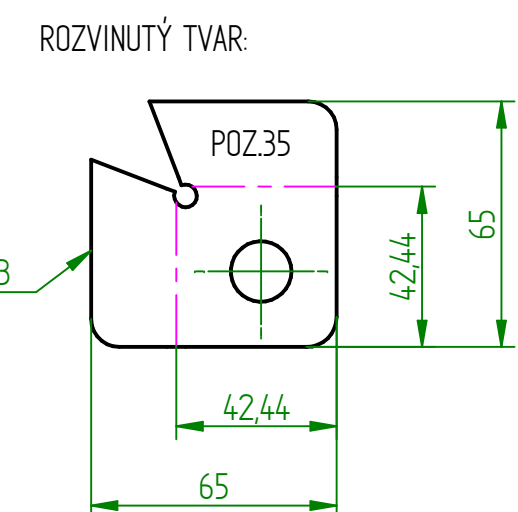
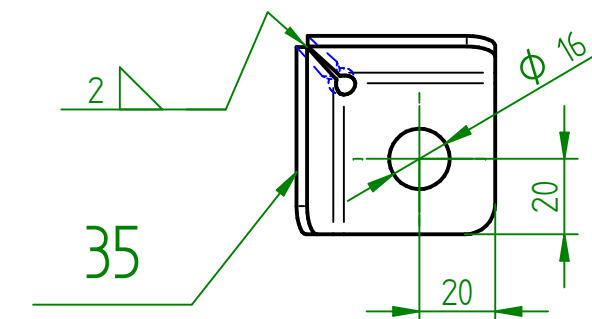
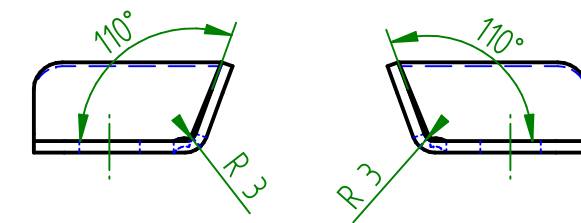
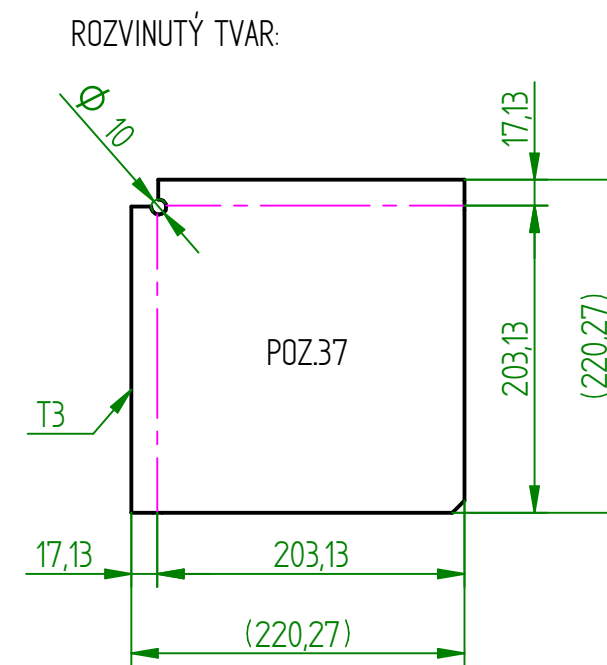
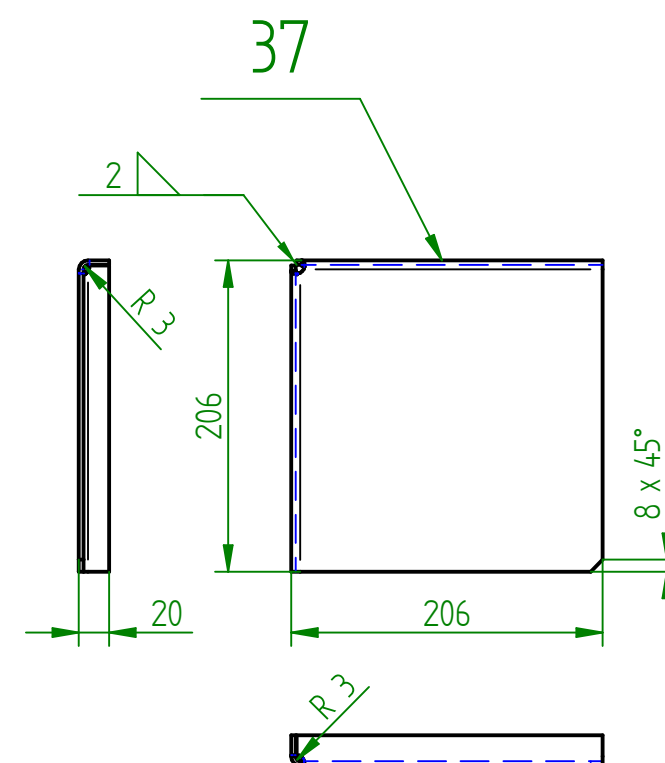
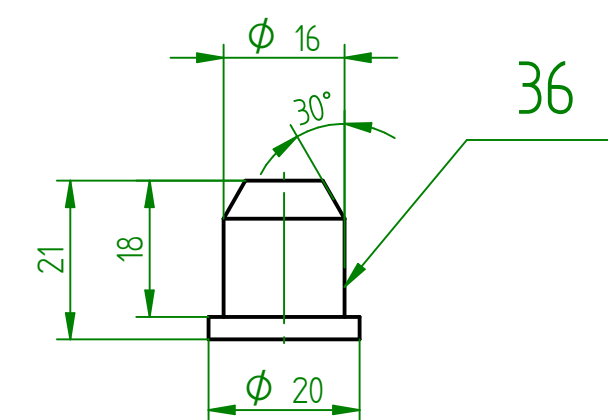
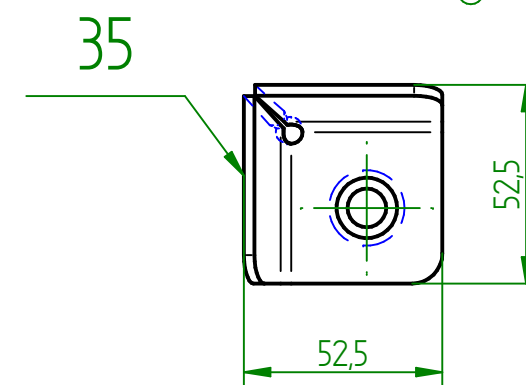
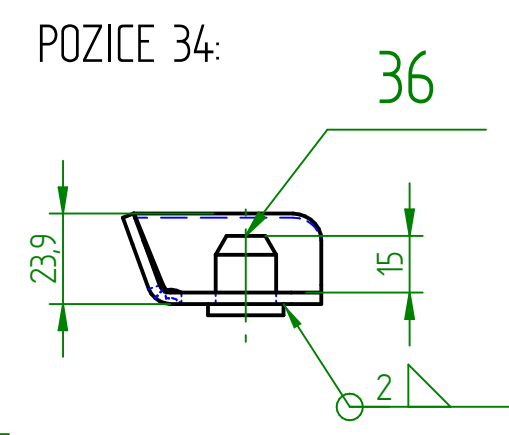
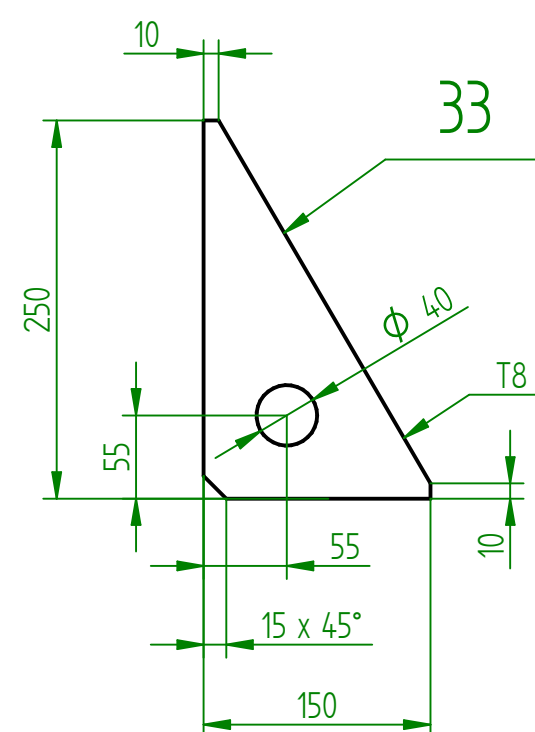
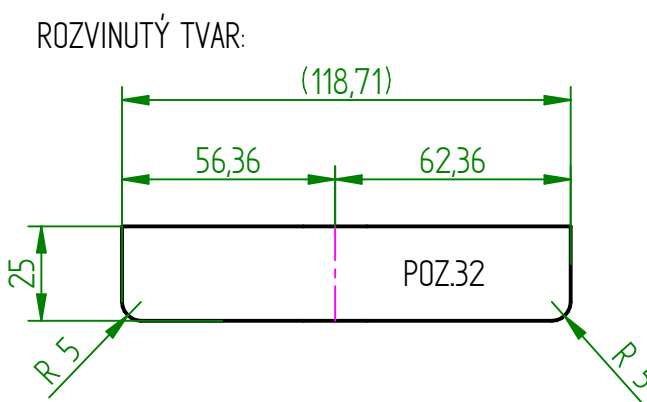
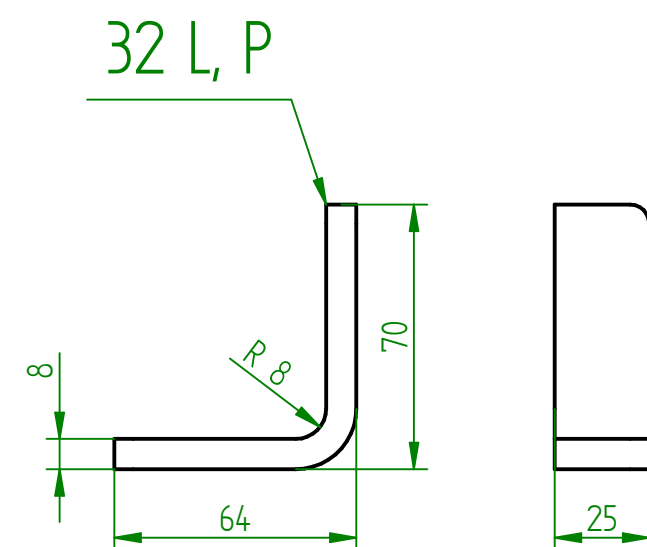
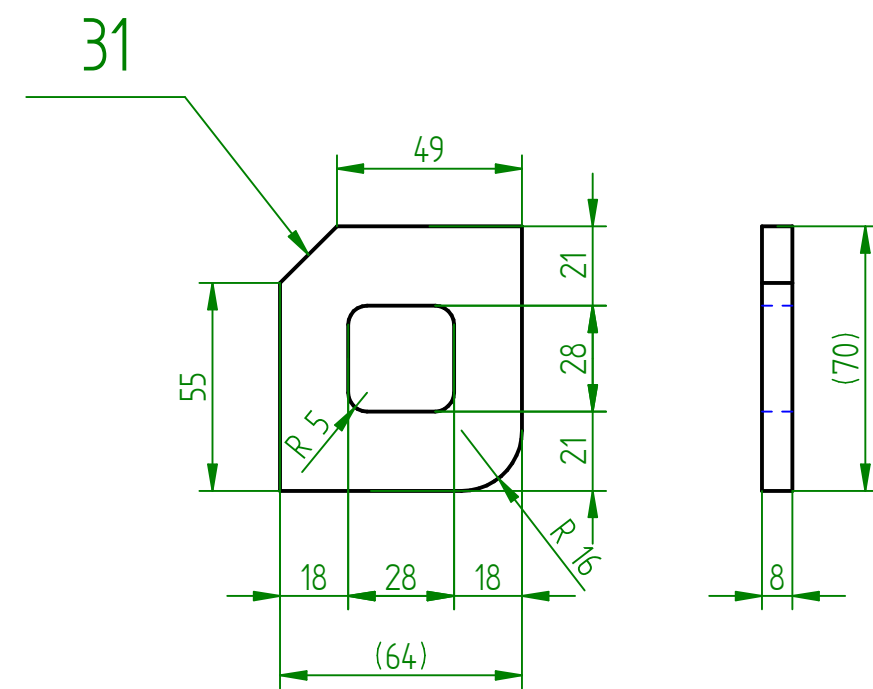
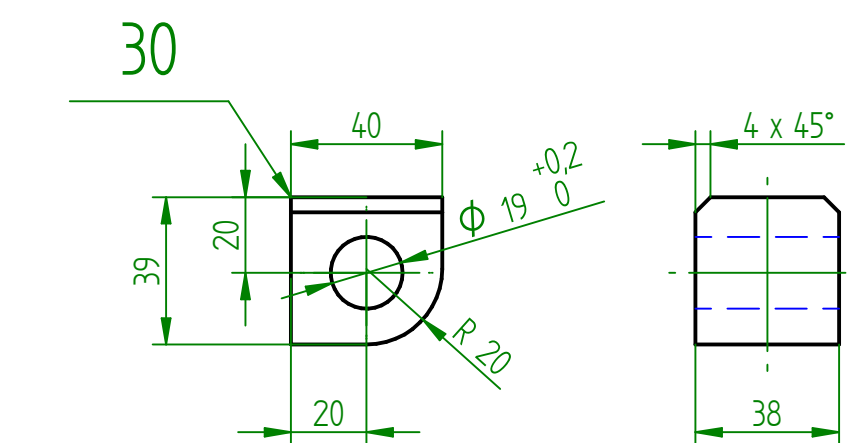
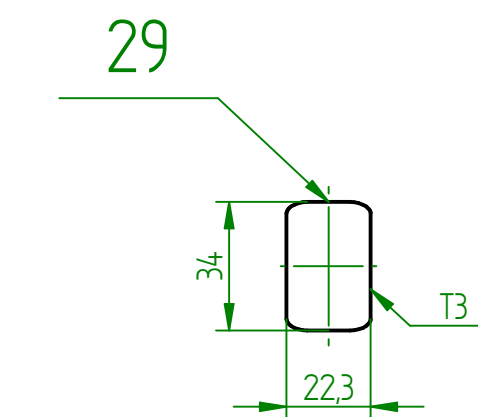
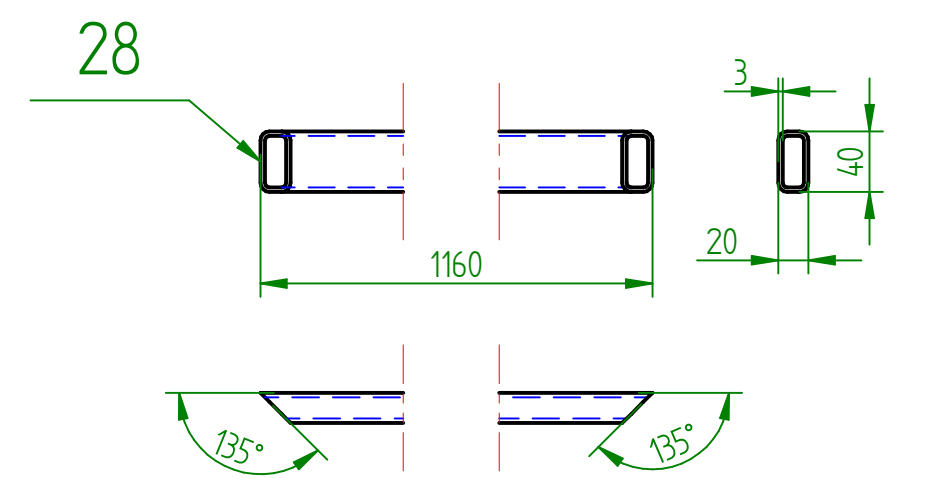
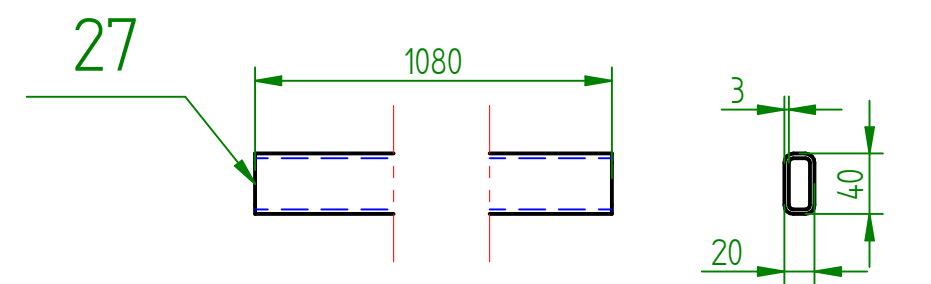
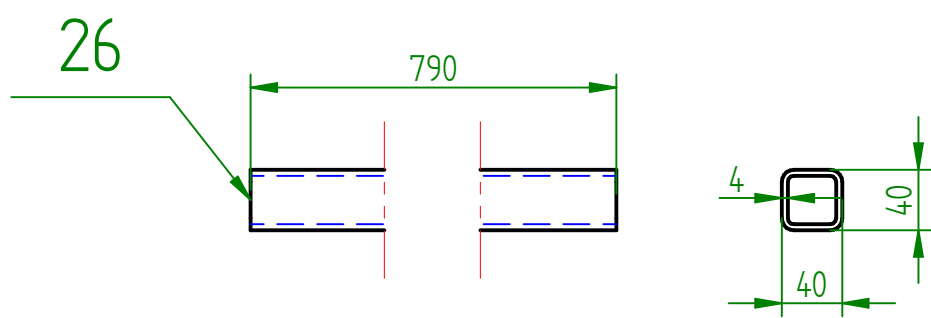


BOČNICE P:

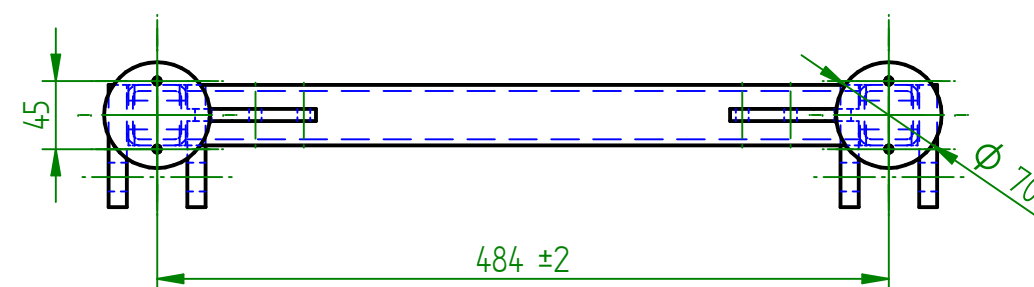
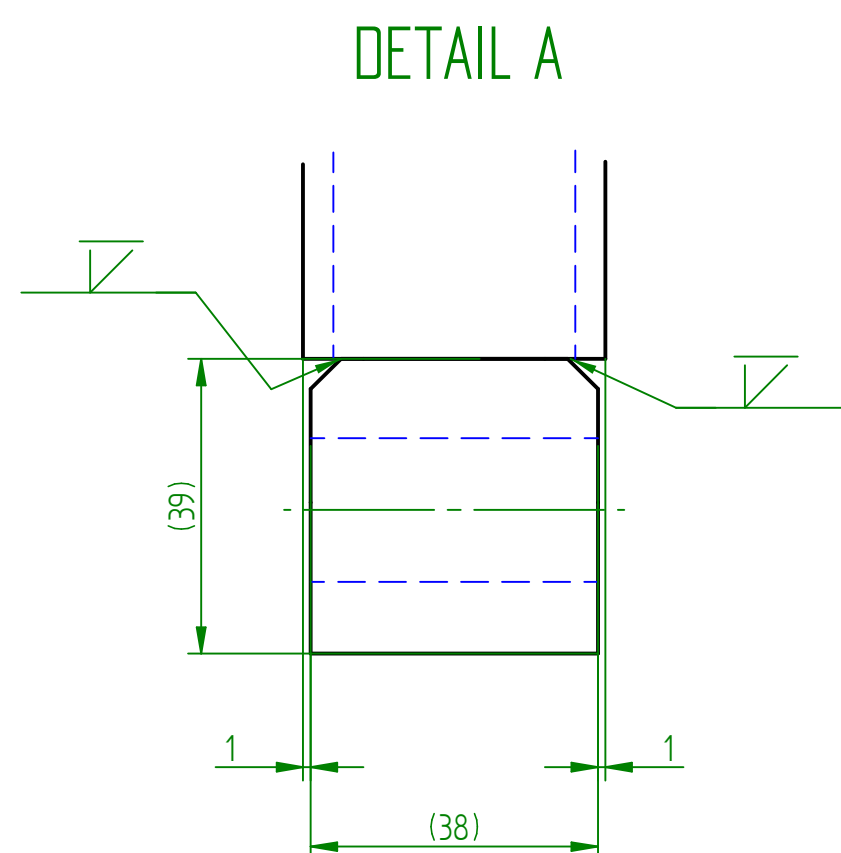
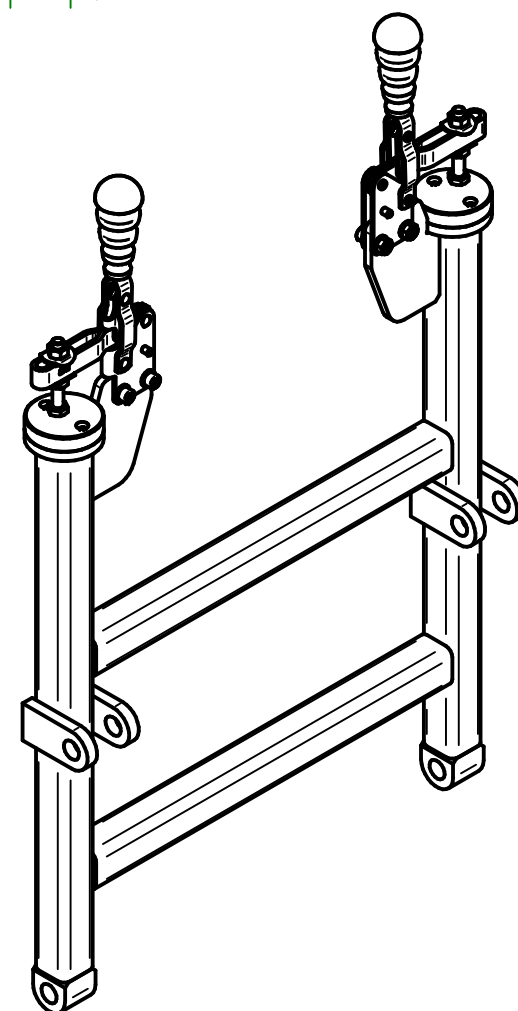
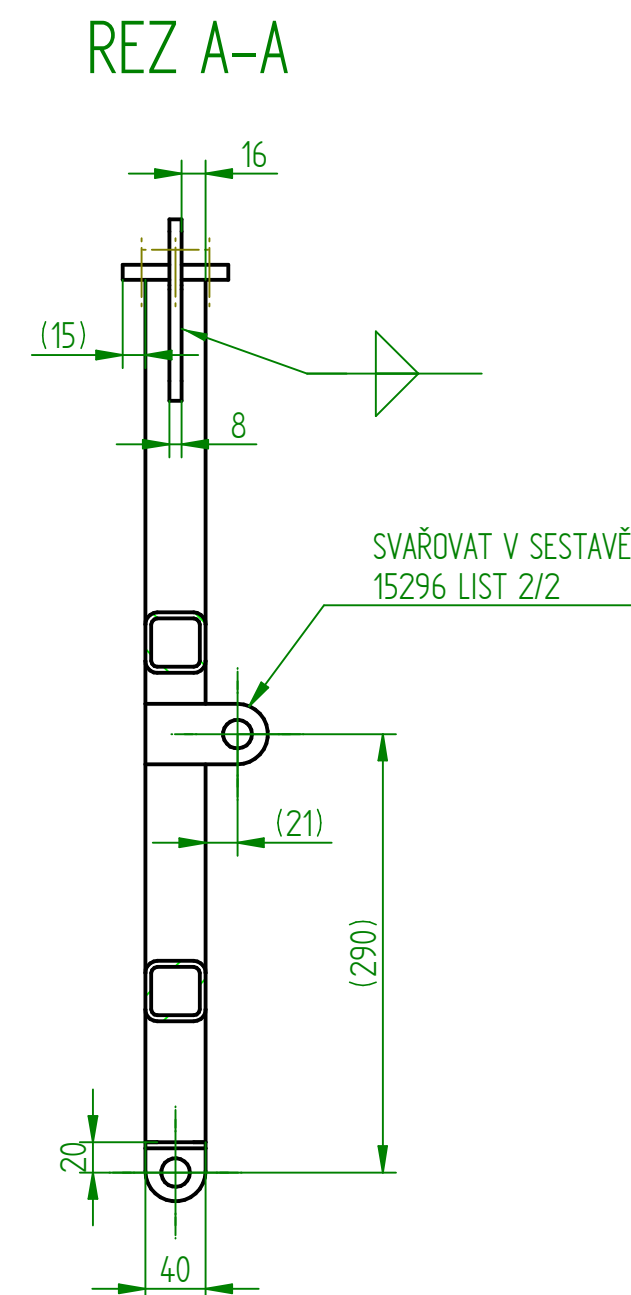
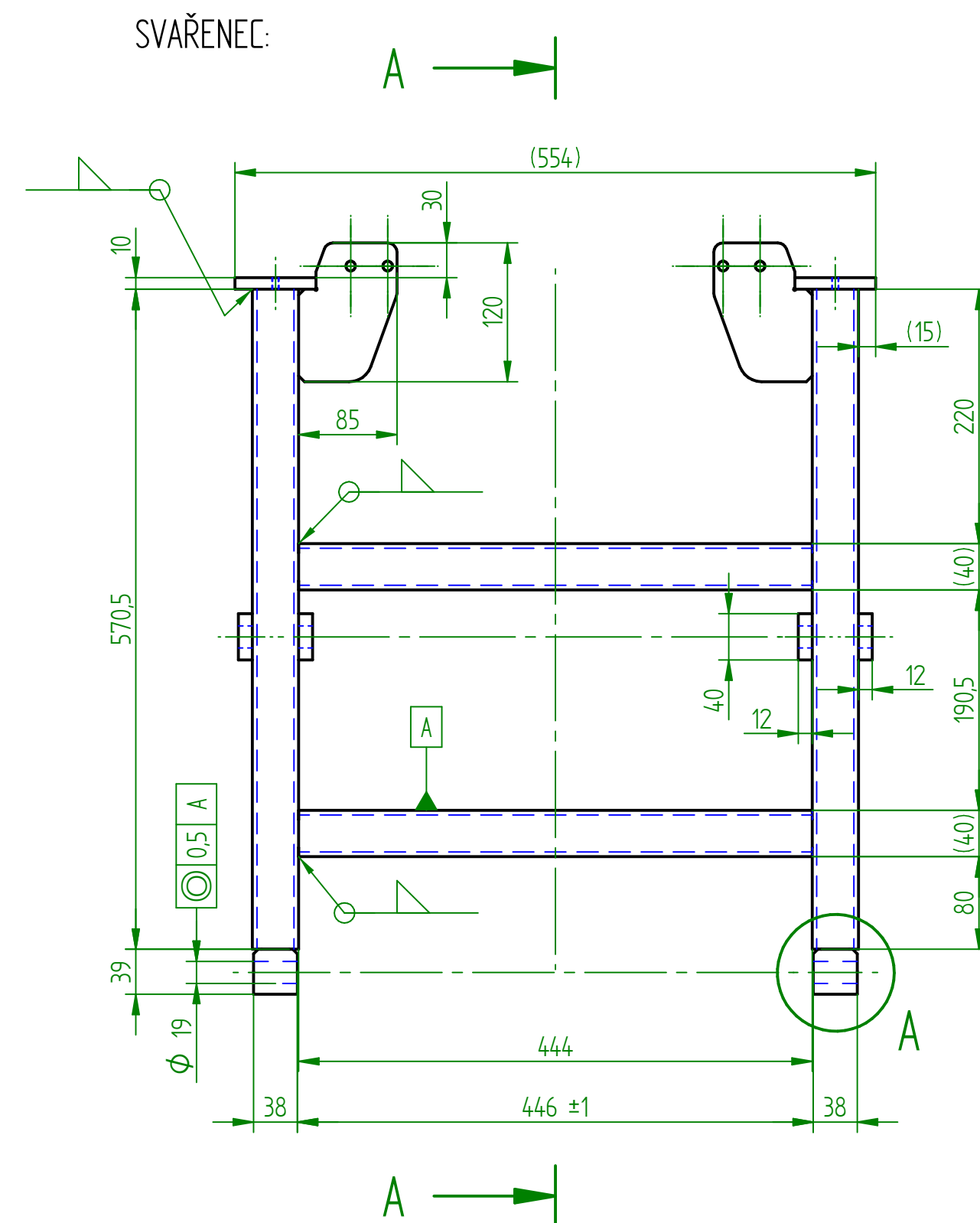
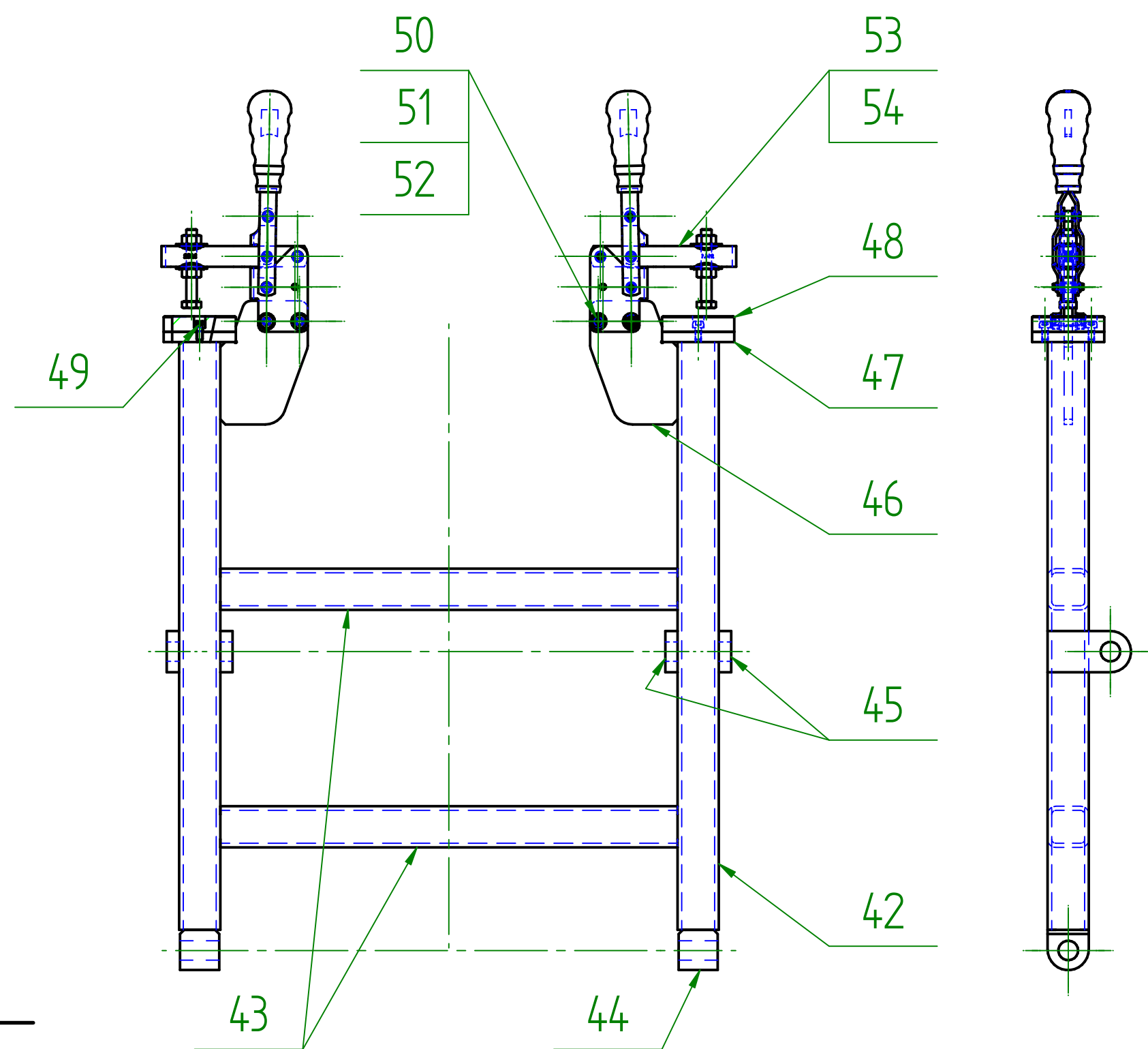


SVARIT 4K, 4V, PLOCHY PRO "V" SVARY UPRAVIT

Index		Zmena		Datum		Podpis		VOP CZ NOVY JICIN			
Material			Rozmer			Hmotnost v kg		18,5	Meritko		
						C. v. sestavy			Poz.	1:X	
Vypracoval			DREISEITL M.			15296			25	Kusovník	
Kontroloval										ODDELENY	
Schválil			Datum			23.7.2014		Poznámka		Starý výkres	
Nazev			BOČNICE L, P			15296-02				Listu	2
										List	1

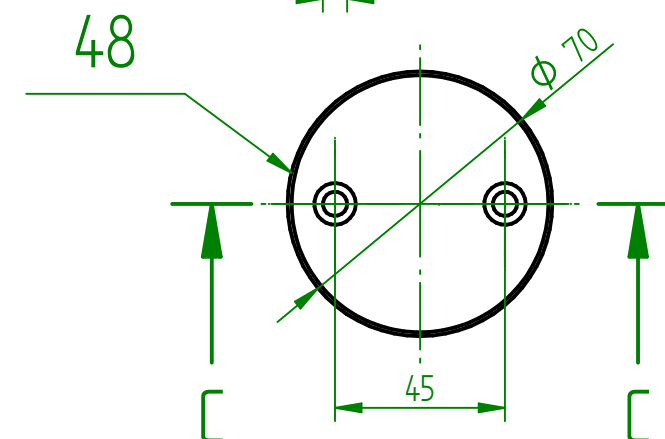
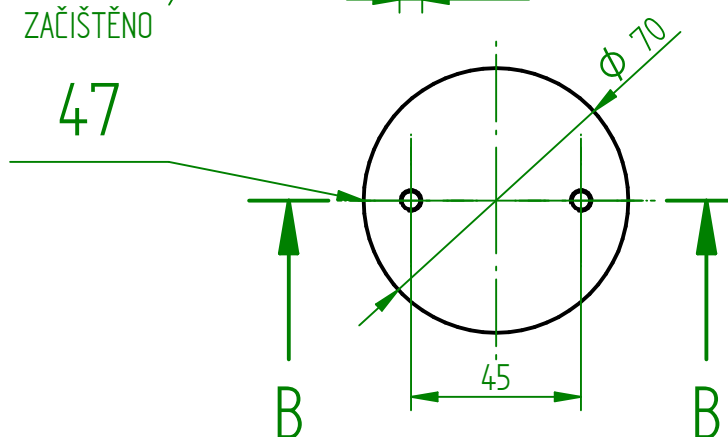
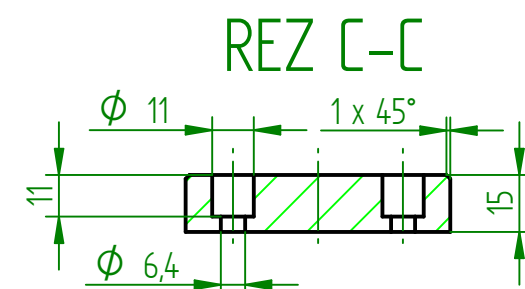
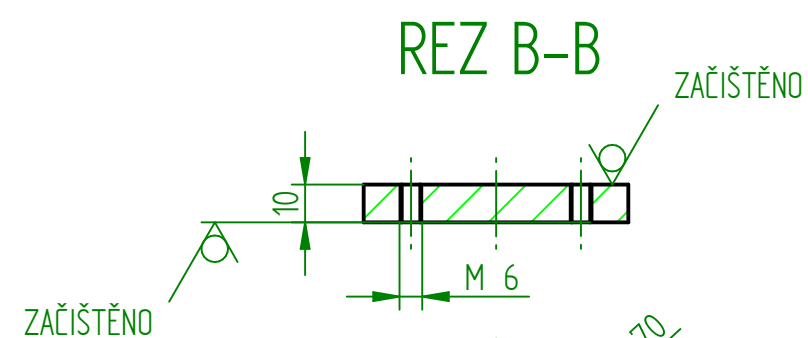
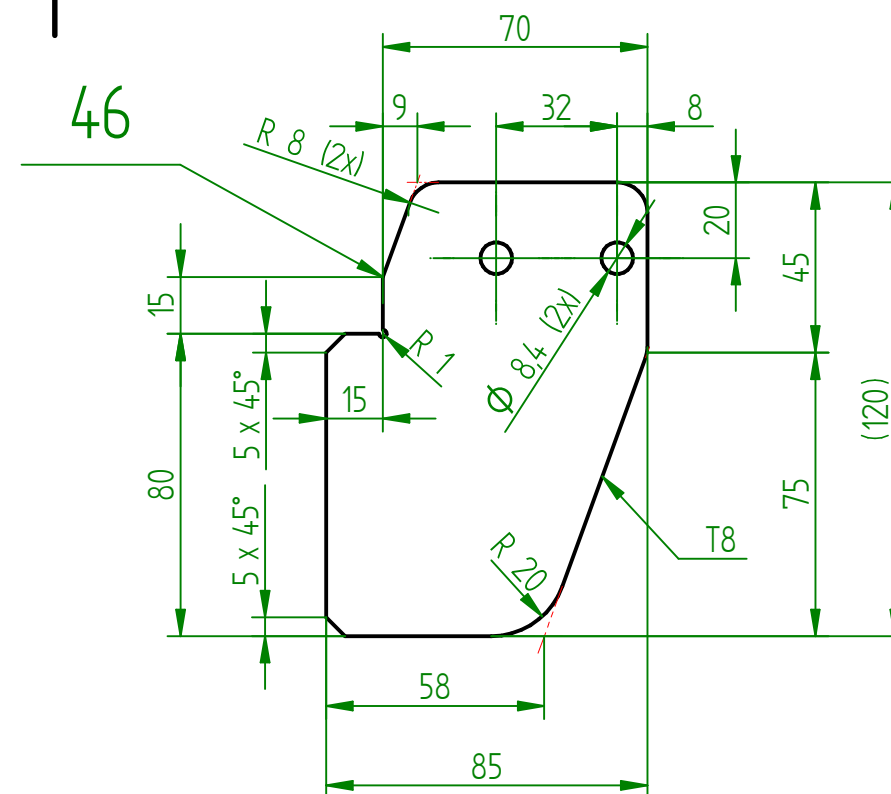
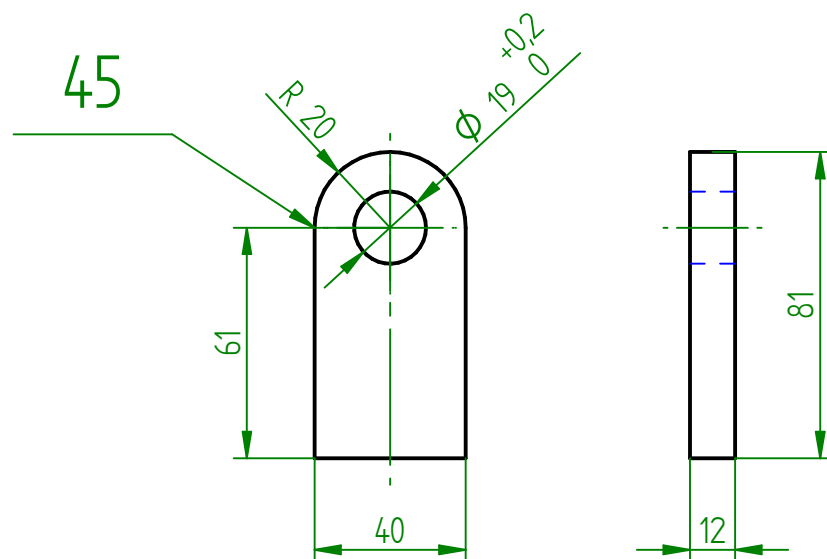


Index	Změna	Datum	Podpis	VOP CZ NOVÝ JICIN			
Material	Rozměr		Hmotnost v kg	18,5	Meritko	1:1	
C. v. sestavy	15296		Poz.	25	Kusovník	ODDELENÝ	
Vypracoval	DREISEITL M.		Datum	23.7.2014	Poznámka	Starý výkres	
Kontroloval			Název		15296-02		Listu 2
Schválil			BOČNICE L, P				List 2

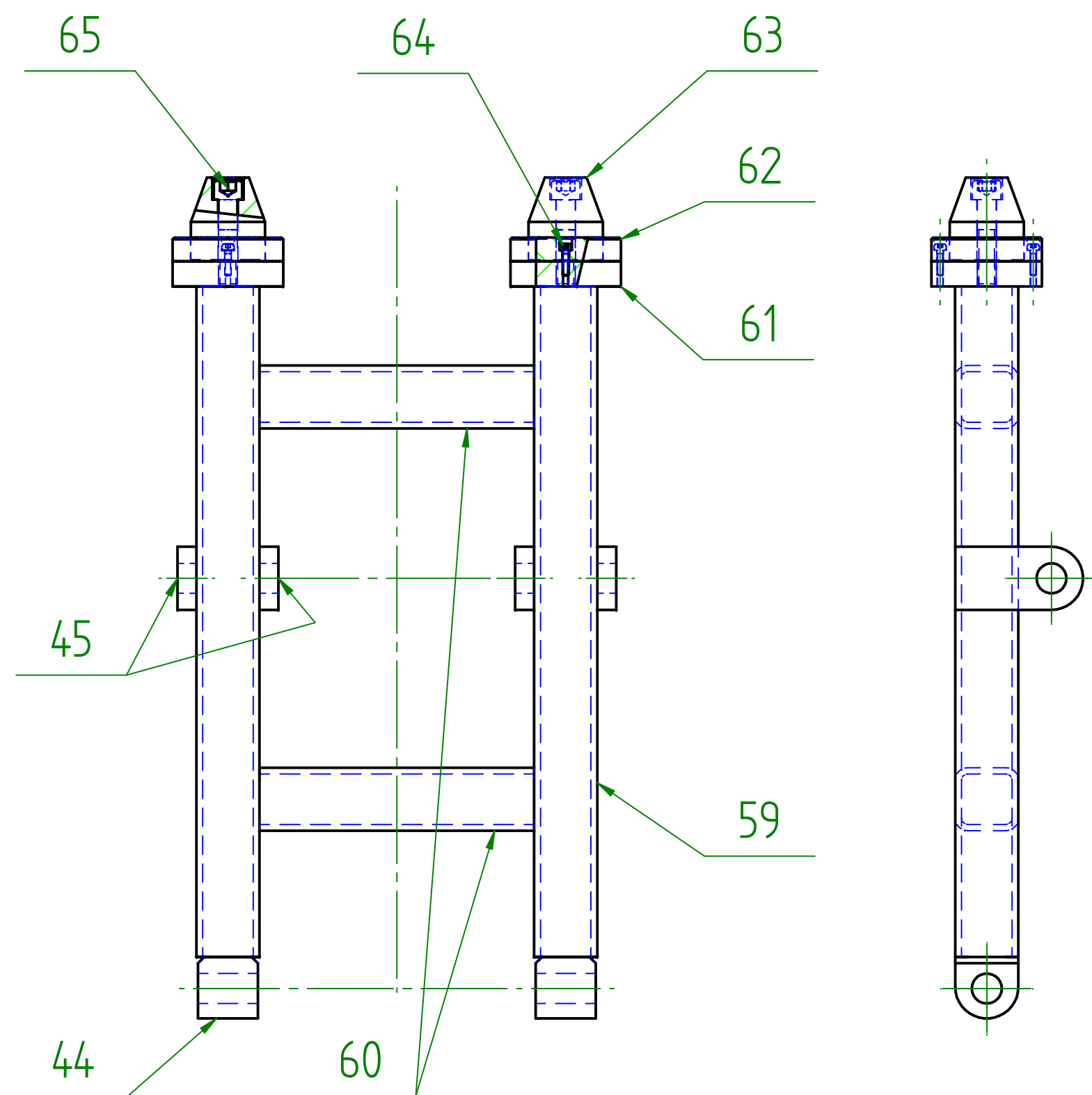


SVARIT 4K, 4V, PLOCHY PRO "V" SVARY UPRAVIT

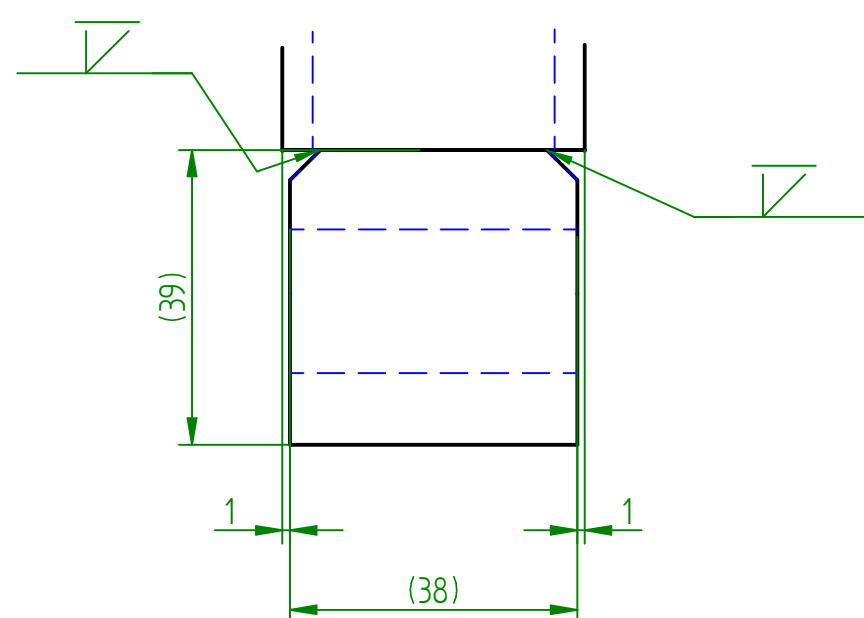
Index	Změna	Datum	Podpis	VOP CZ NOVÝ JICIN			
Material		Rozměr		Hmotnost v kg	18	Meritko	15
Vypracoval		DREISEITL M.		C. v. sestavy	15296	Poz.	41
Kontroloval		Datum		23.7.2014		Kusovník	
Schválil		Datum		23.7.2014		ODDELENÝ	
Název		STOJNA L		15296-03		Starý výkres	2
						Listu	1



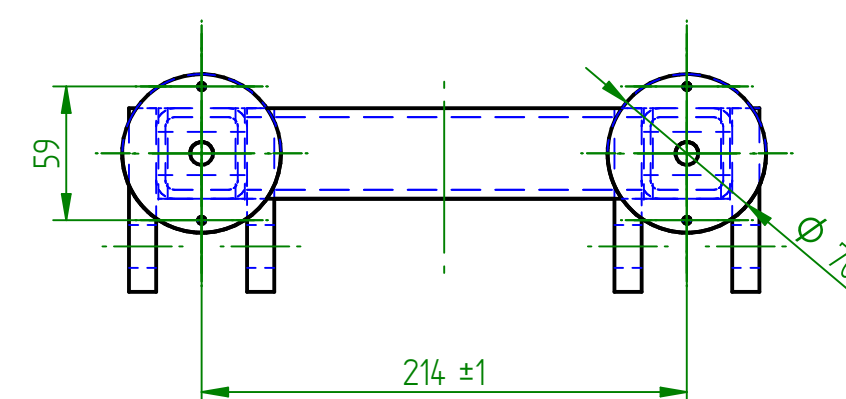
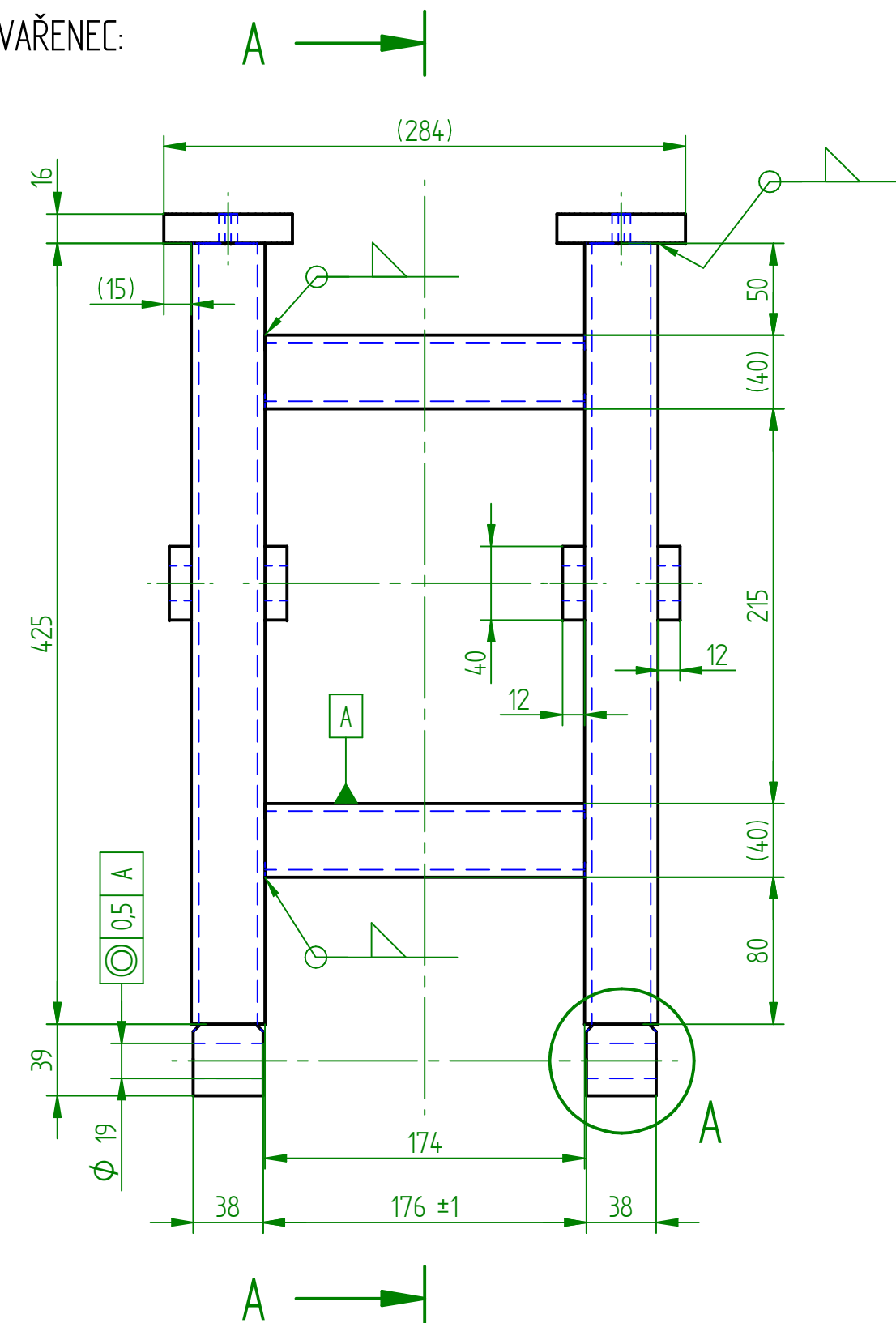
Index		Zmena		Datum		Podpis		VOP CZ NOVY JICIN	
Material		Rozmer			Hmotnost v kg		18	Meritko	
Vypracoval DREISEITL M.					C. v. sestavy		15296	Poz.	1:5
Kontroloval							41	Kusovník	
Schválil		Datum 23.7.2014			Poznámka		Stary vykres		ODDELENY
Název					STOJNA L				15296-03
									Listu 2
									List 2



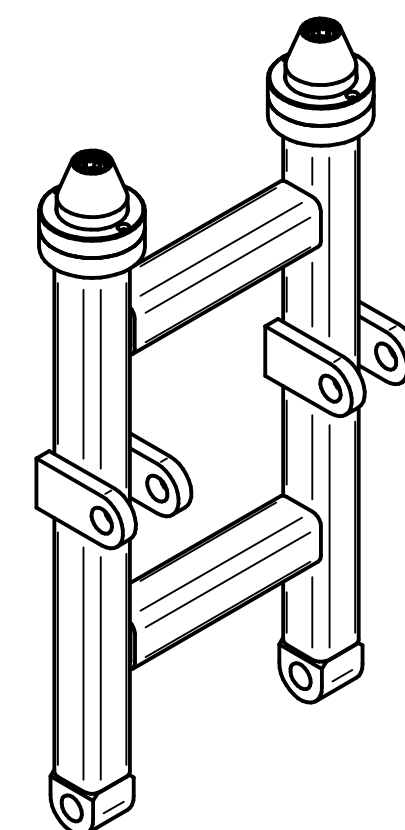
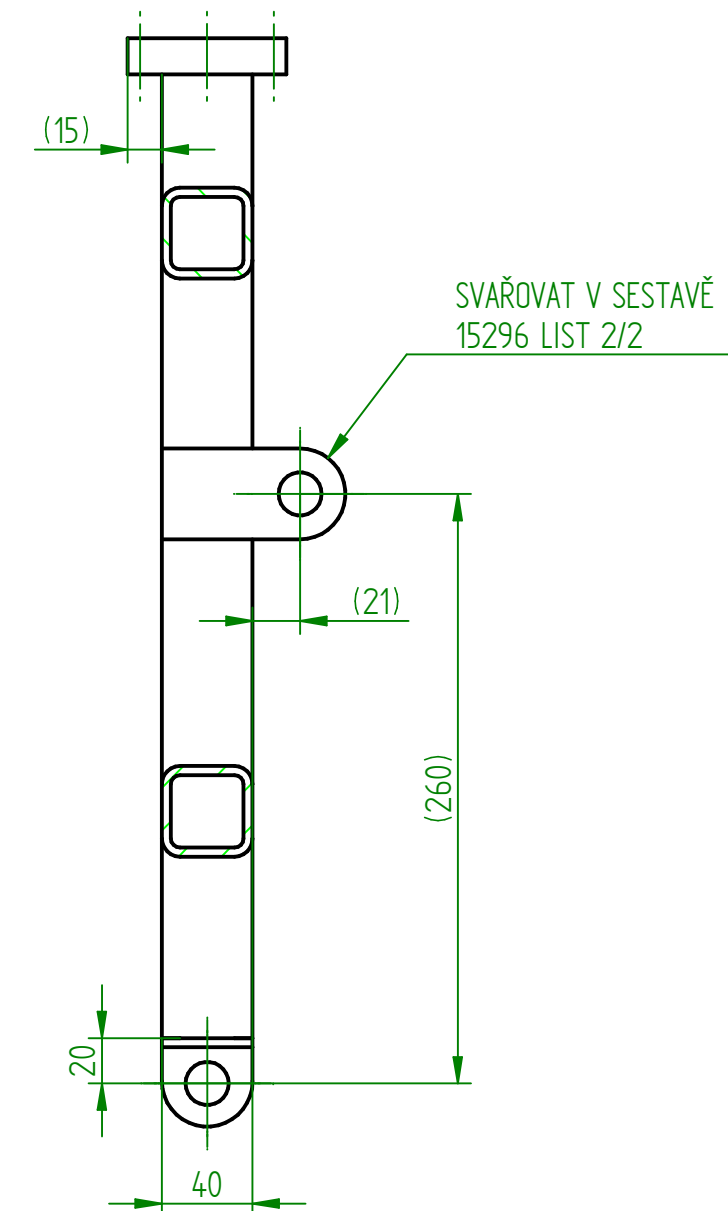
DETAIL A



SVAŘENEC:

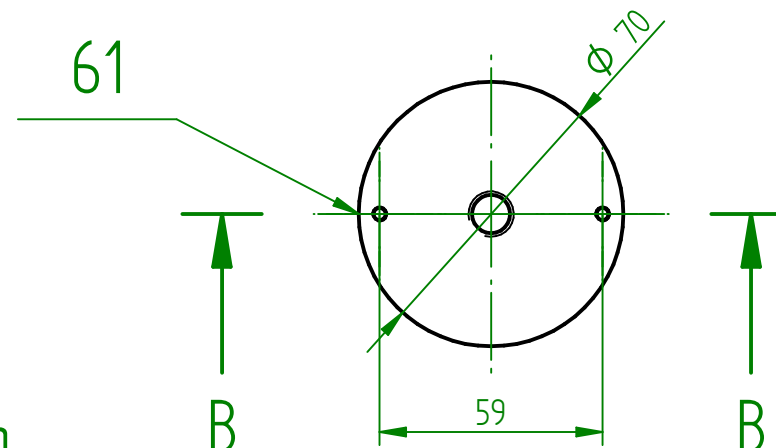
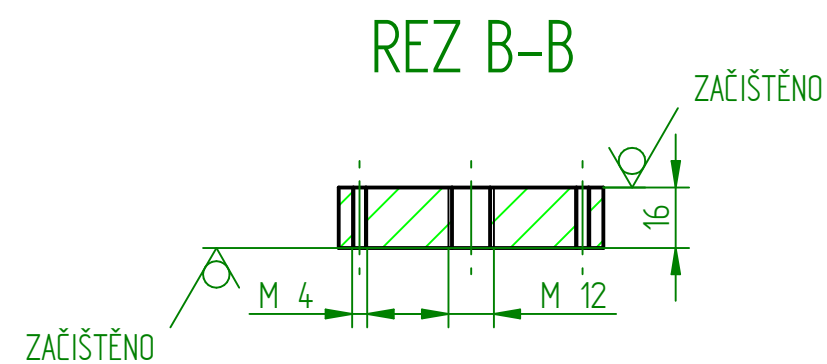
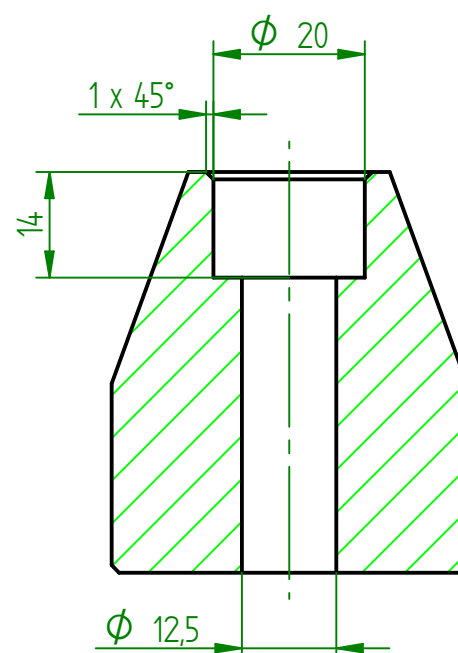
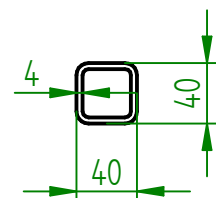
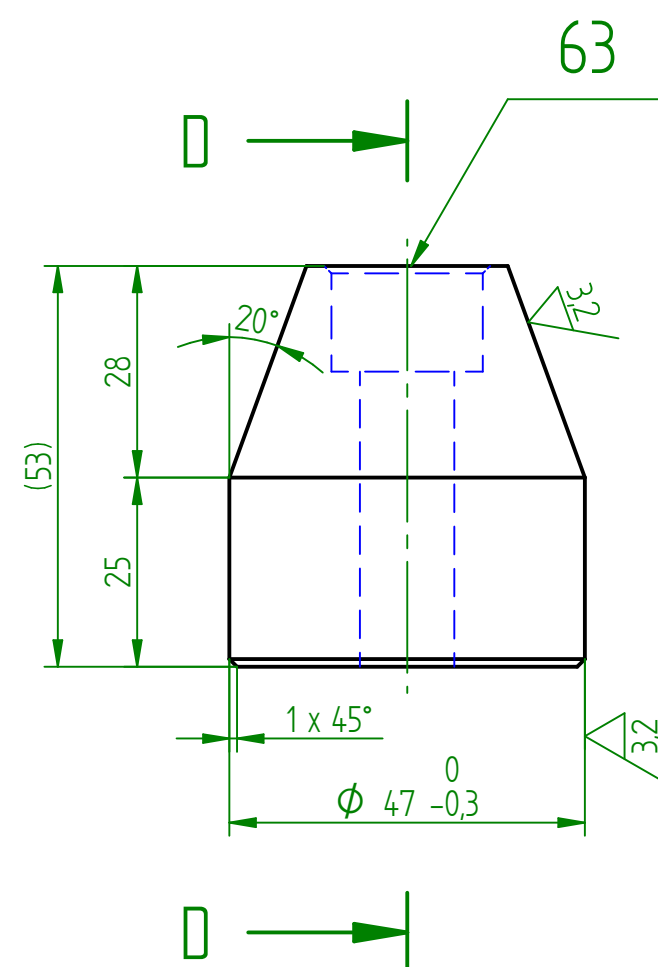


REZ A-A

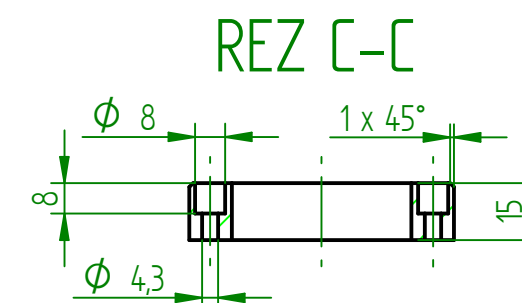


SVARIT 4K, 4V, PLOCHY PRO "V" SVARY UPRAVIT

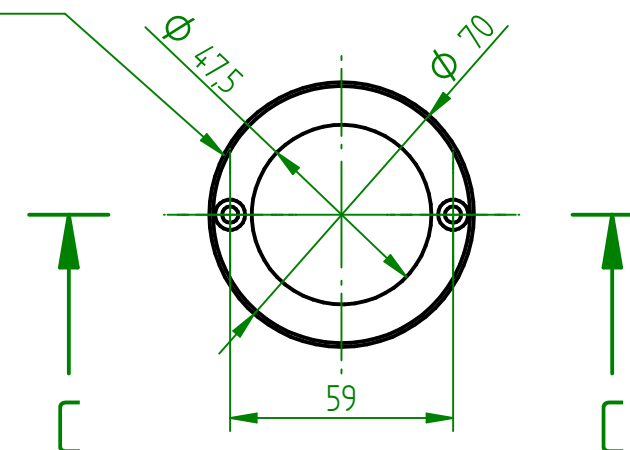
Index	Změna	Datum	Podpis	VOP CZ NOVY JICIN			
Material		Rozměr		Hmotnost v kg	9,5	Meritko	1:X
Vypracoval		DREISEITL M.		C. v. sestavy	15296	Poz.	58
Kontroloval		Datum		23.7.2014		Kusovník	
Schválil		Datum		23.7.2014		ODDELENY	
Název		STOJNA P		Poznámka		Starý výkres	
				15296-04		Listu	2
						List	1



ZAČIŠTĚNO



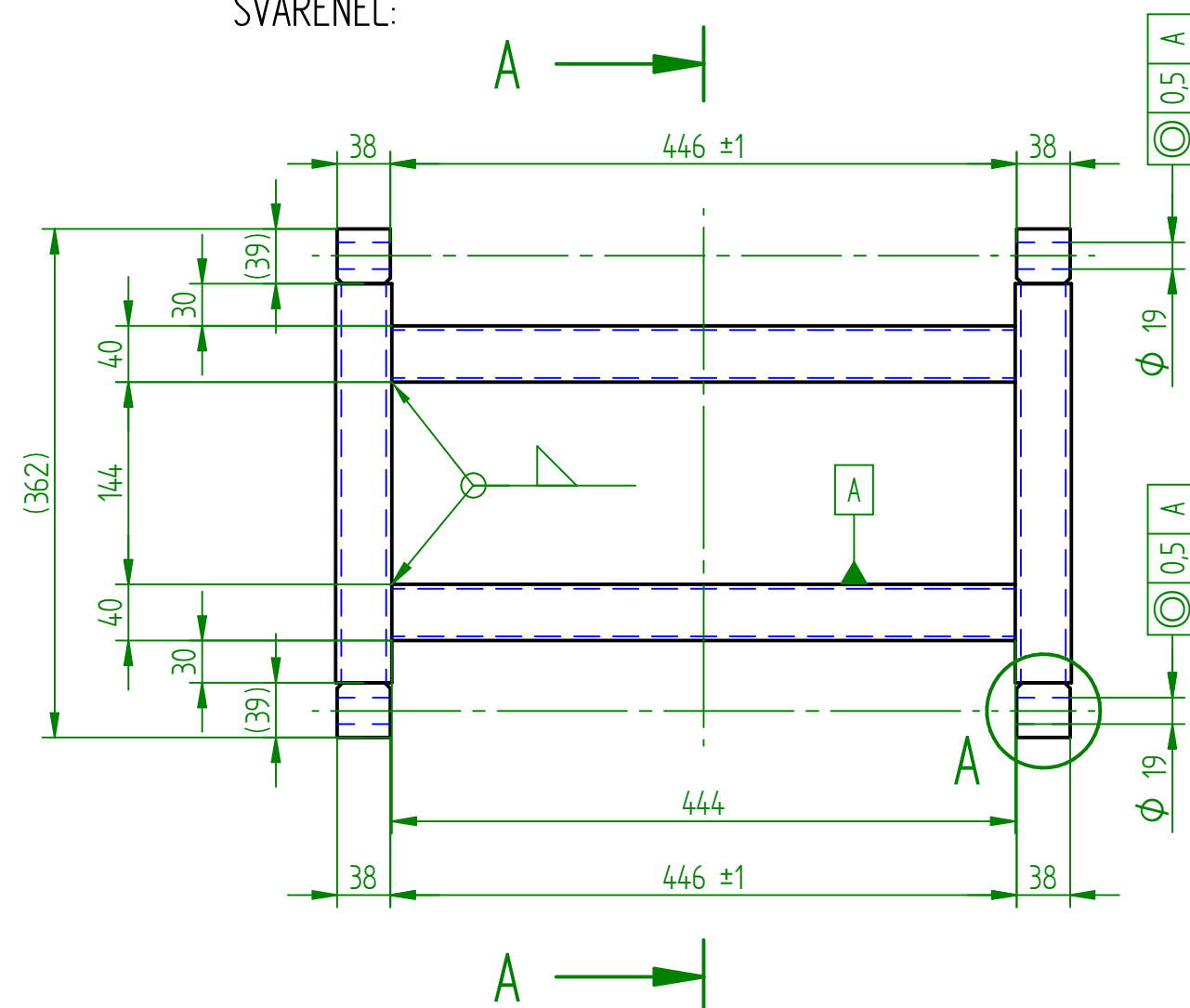
62



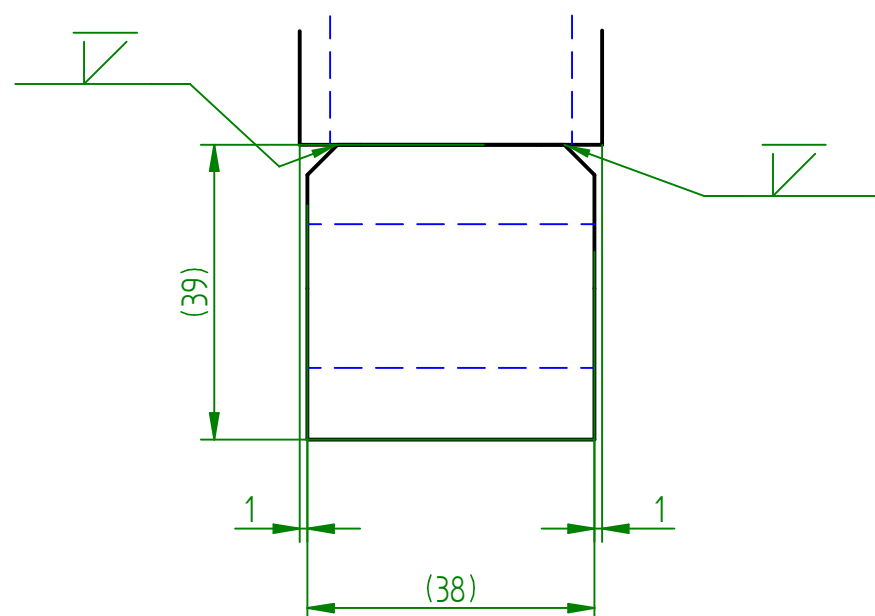
REZ D-D

Index		Zmena		Datum		Podpis		VOP CZ NOVY JICIN			
Material			Rozmer			Hmotnost v kg 9,5		Meritko			
Vypracoval DREISEITL M.						C. v. sestavy 15296		Poz. 58			
Kontroloval								Kusovník			
Schválil			Datum 23.7.2014			Poznámka		ODDELENY			
Název						15296-04		Stary výkres			
STOJNA P								Listu 2			
								List 2			

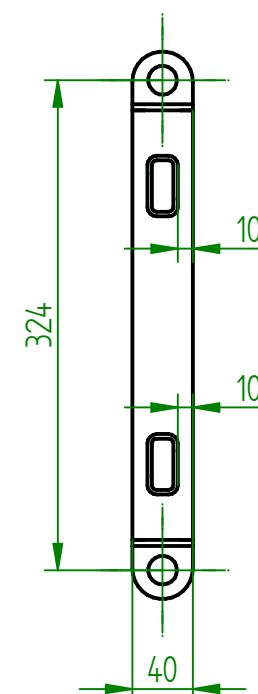
SVARENEC:



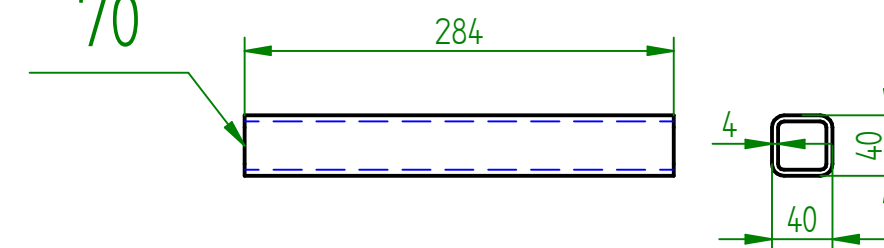
DETAIL A



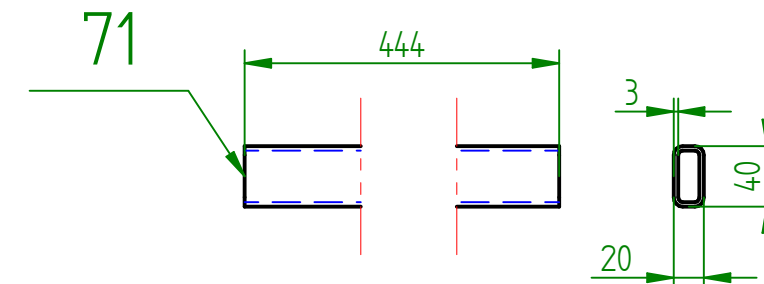
REZ A-A



70



71



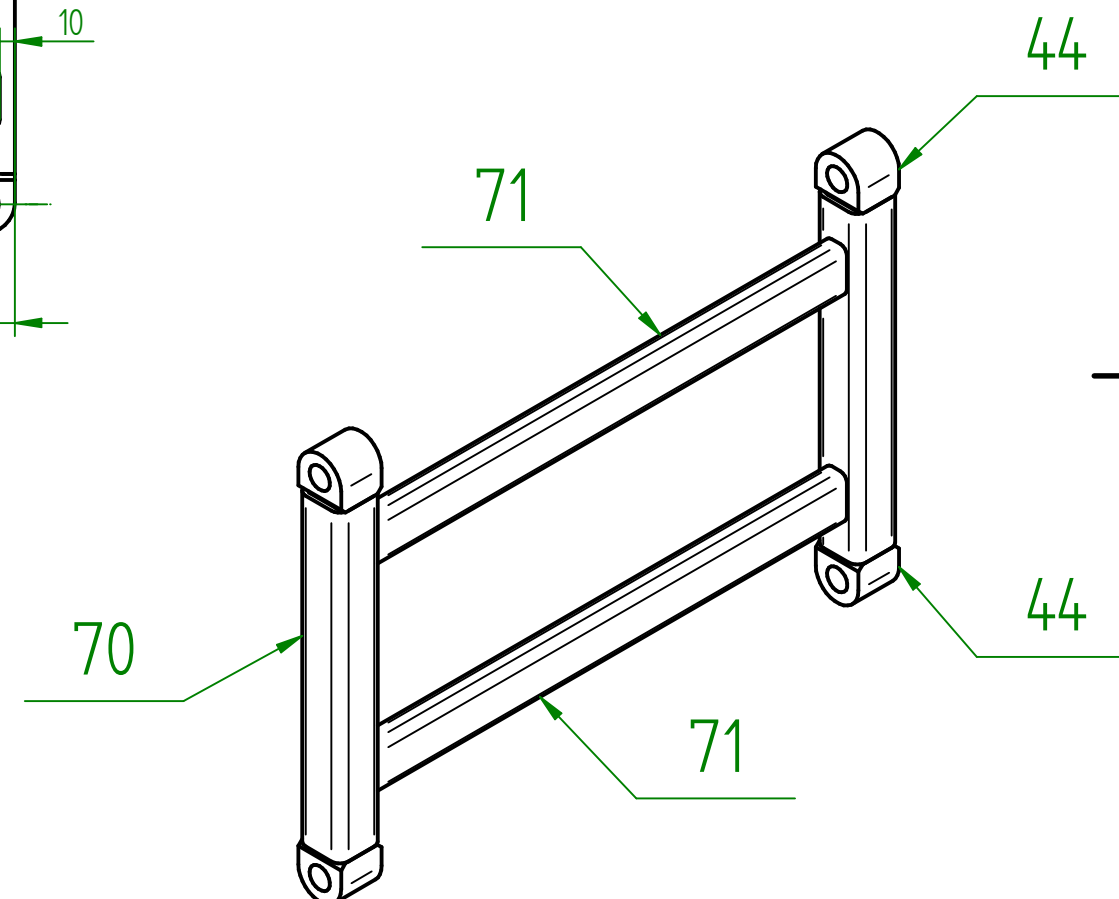
44

71

70

71

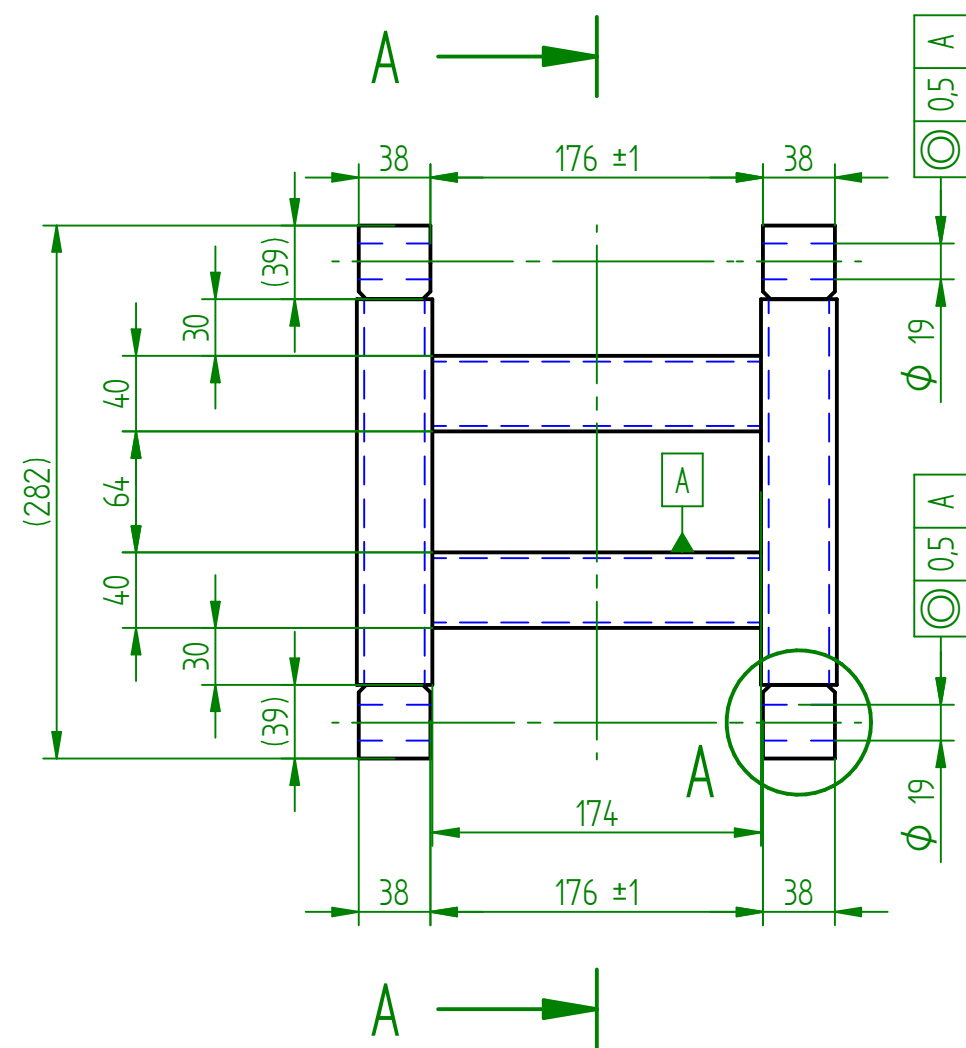
44



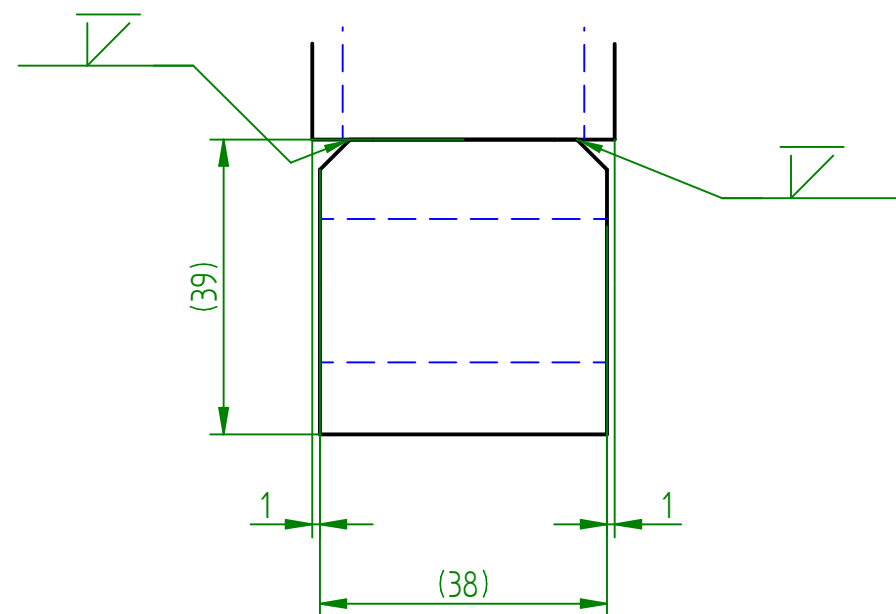
SVARIT 4K, 4V, PLOCHY PRO "V" SVARY UPRAVIT

Index		Zmena		Datum		Podpis		VOP CZ NOVY JICIN			
								Hmotnost v kg 5,8		Meritko	
Material		Rozmer				C. v. sestavy 15296		Poz. 69		1:X	
Vypracoval DREISEITL M.										Kusovník	
Kontroloval										ODDELENY	
Schválil		Datum 23.7.2014				Poznámka				Stary vykres	
Nazev						STOJNA L - VÝZTUHA				15296-05	
										Listu	
										List	

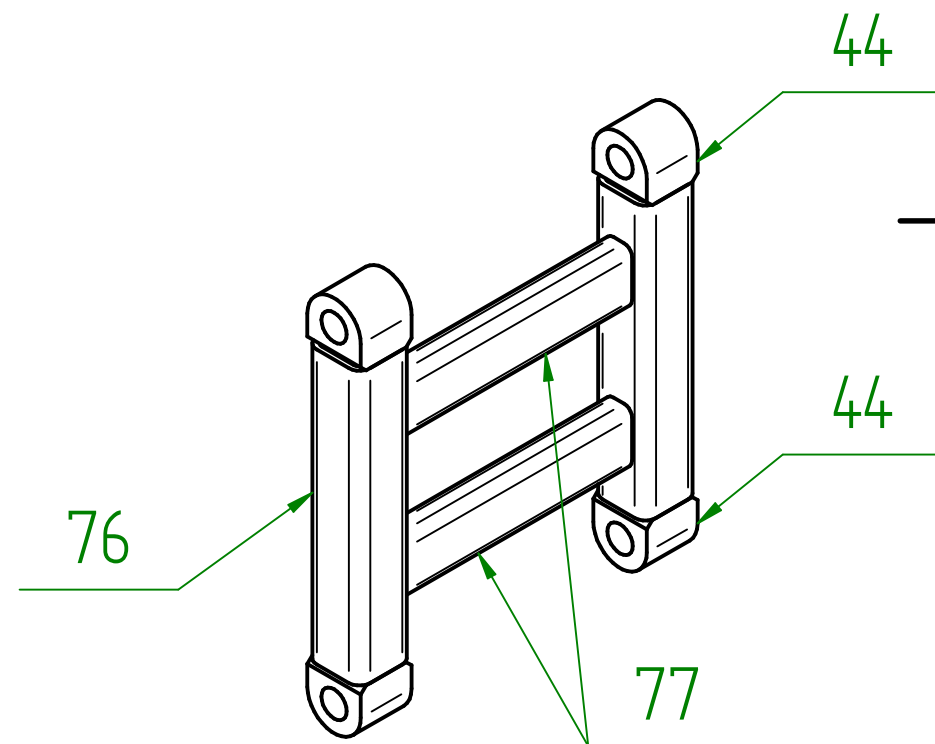
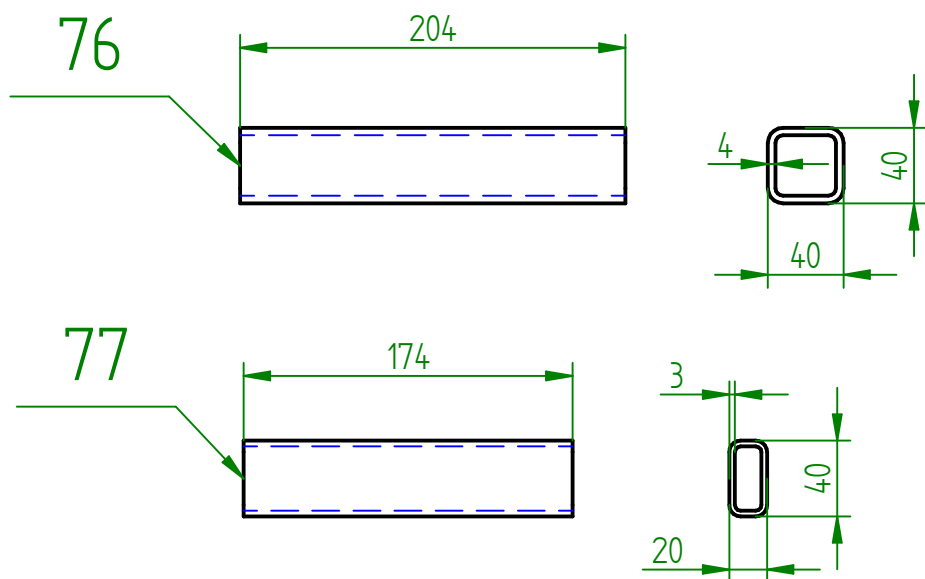
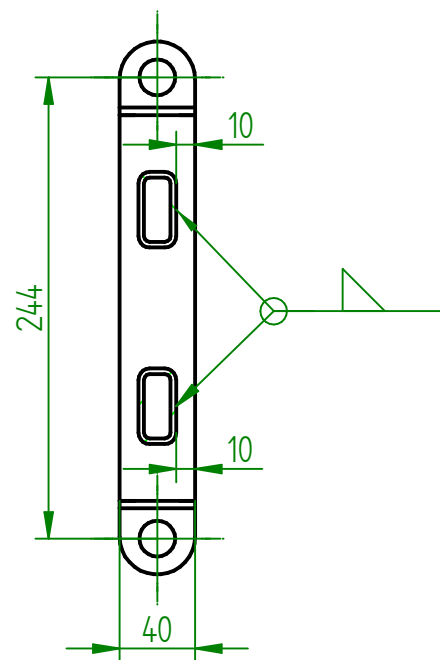
SVĚŘENEC:



DETAIL A



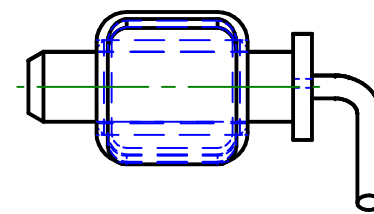
REZ A-A



SVARIT 4K, 4V, PLOCHY PRO "V" SVARY UPRAVIT

Index		Zmena		Datum		Podpis		VOP CZ NOVY JICIN	
Material			Rozmer			Hmotnost v kg 3,9		Meritko 1:X	
						C. v. sestavy 15296	Poz. 75		
Vypracoval DREISEITL M.								Kusovník ODDELENY	
Kontroloval									
Schválil			Datum 23.7.2014			Poznámka		Stary vykres	
Nazev			STOJNA P - VÝZTUHA			15296-06			Listu
									List

Technical drawing of a chain connection between two profiles. The top part shows a side view with dimensions: total length (1050), height (40), and angles (40° and 50°). The bottom part shows a front view with a height of 40. The text "ČEP S PROFILEM SPOJIT ŘETĚZEM 3x14, L=150 (POZ.104)" is centered between the views. The numbers 93 and 87 are on the left and right sides respectively.



1050

40

50°

87

ČEP S PROFILEM SPOJIT
ŘETĚZEM 3x14, L=150 (POZ.104)

40°

93

40

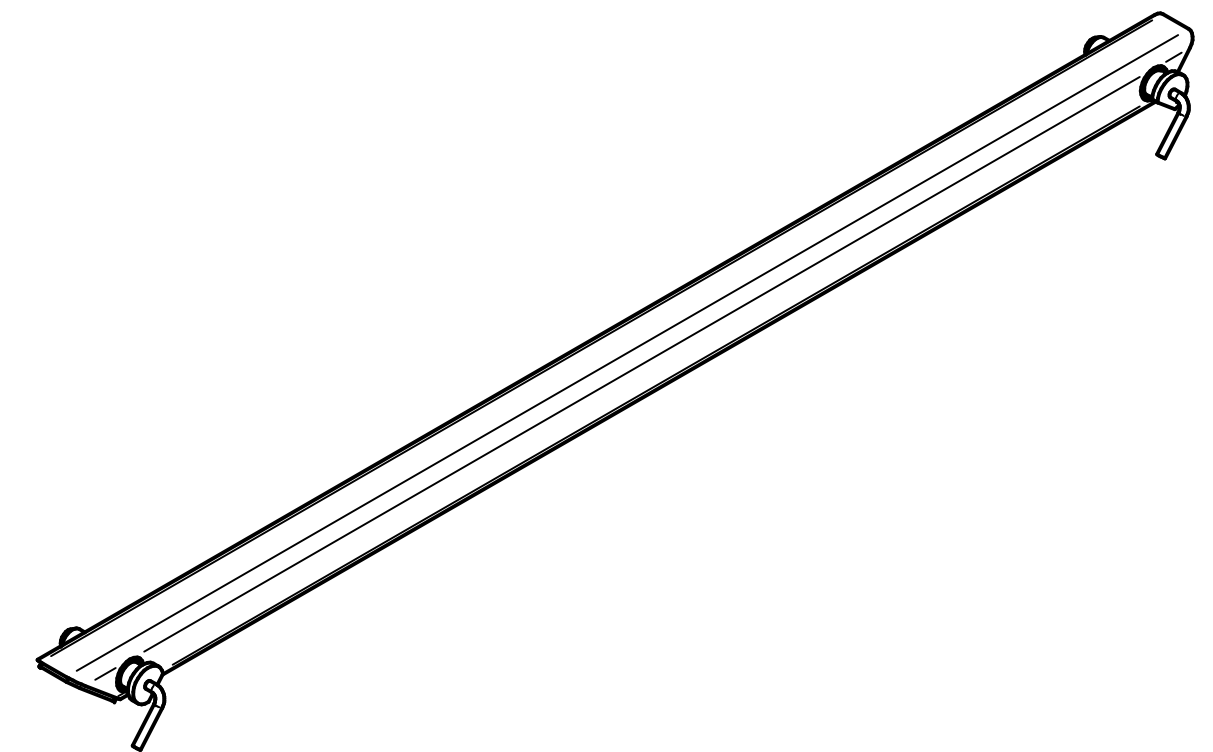
Technical drawing of a mechanical part, showing front, top, and side views with dimensions.

Front View (Left): Shows a horizontal profile with a total length of 1050. The left end has a vertical dimension of 40. A circular feature is located 51.8 from the left end. The right end has a vertical dimension of 20. A dimension of 957.9 is shown from the center of the circular feature to the right end. A dimension of 40.3 is shown from the right end to the center of the circular feature. A dimension of 85 is shown from the bottom to the center of the circular feature.

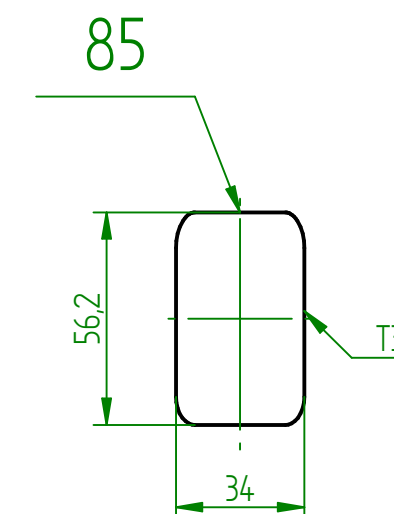
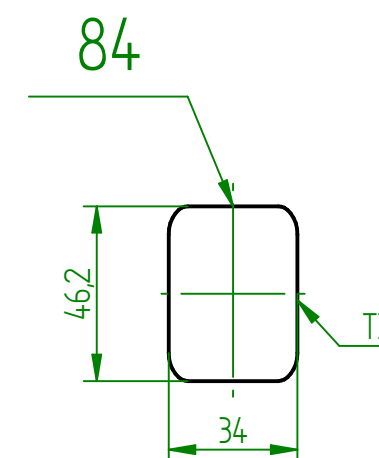
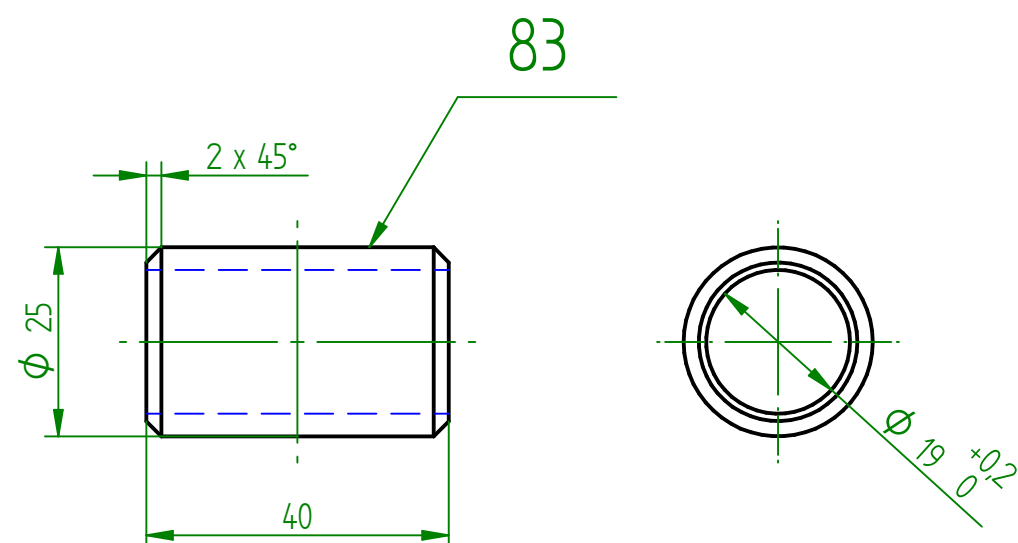
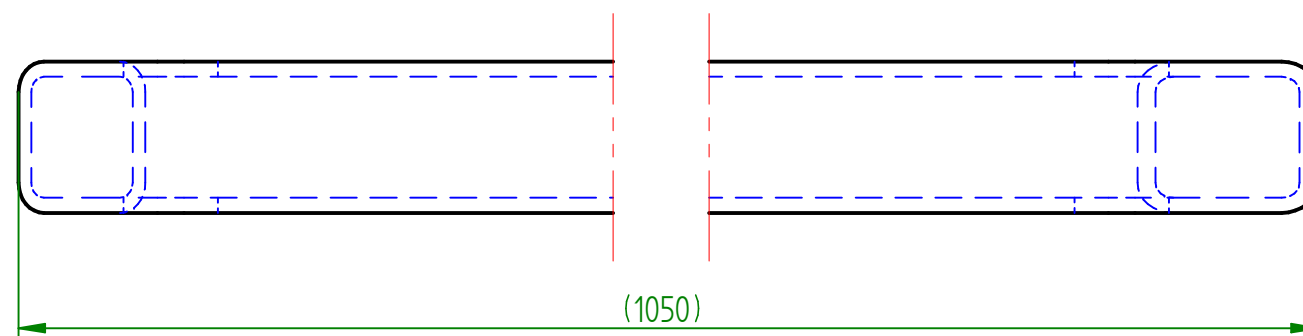
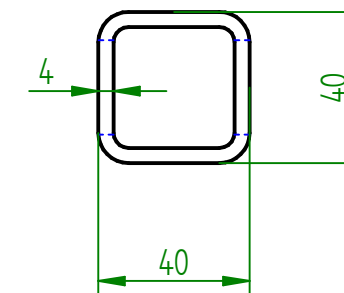
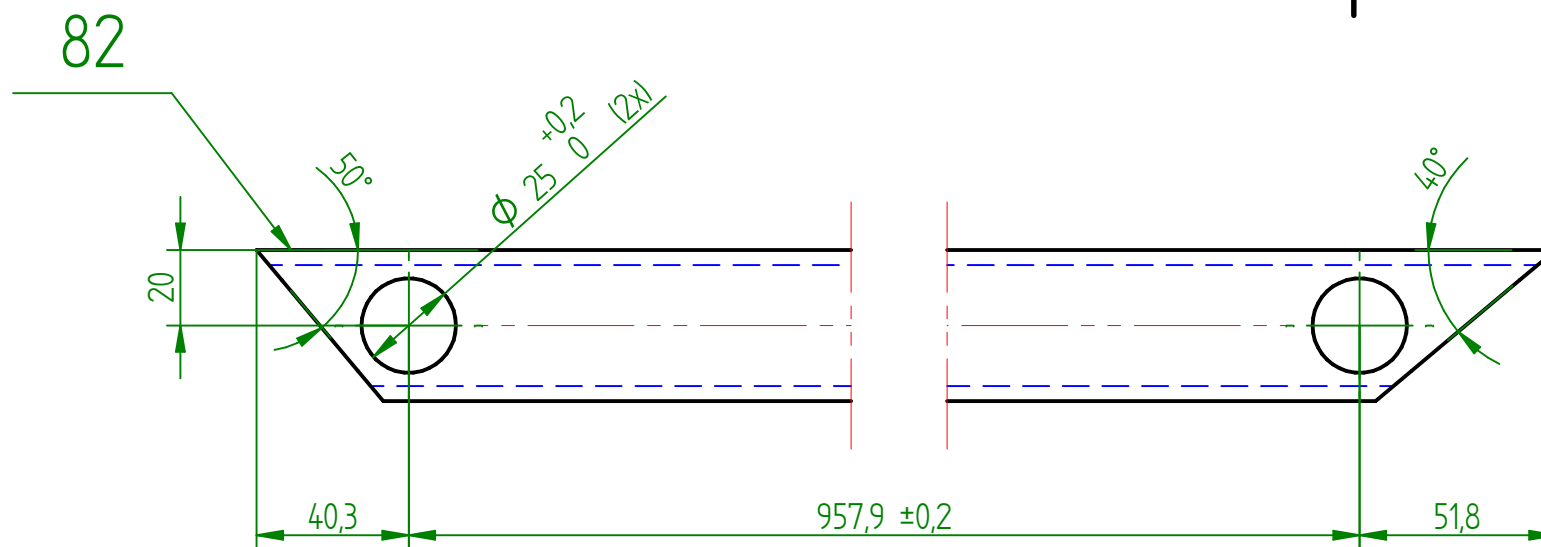
Top View (Right): Shows a square profile with a side length of 84. A circular feature is located 3 from the bottom edge. A dimension of 3 is shown from the top edge to the center of the circular feature.

Side View (Bottom): Shows a vertical profile with a total height of 1050. The bottom end has a horizontal dimension of 40. A circular feature is located 51.8 from the bottom end. The top end has a horizontal dimension of 20. A dimension of 957.9 is shown from the center of the circular feature to the top end. A dimension of 40.3 is shown from the top end to the center of the circular feature. A dimension of 85 is shown from the left to the center of the circular feature.

Technical drawings of a shaft with a keyway. The left drawing is a front view showing a shaft with a diameter of 40 and a keyway of width 83. The right drawing is a side view showing the shaft with a diameter of 82 and a keyway of width 83. Both views include dimension lines and callouts for the keyway dimensions.

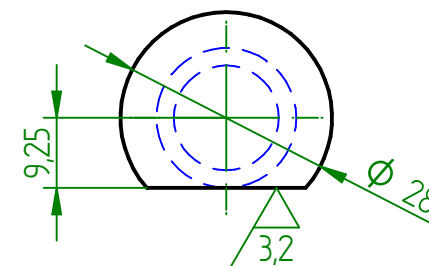
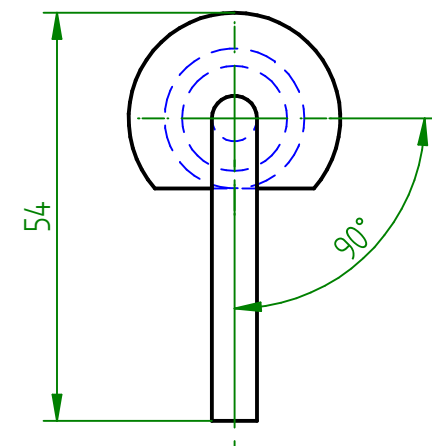
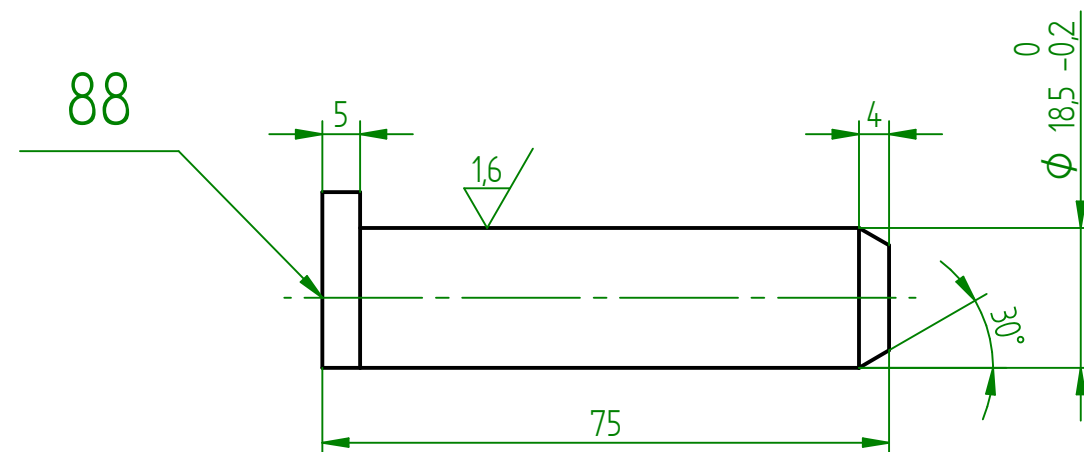
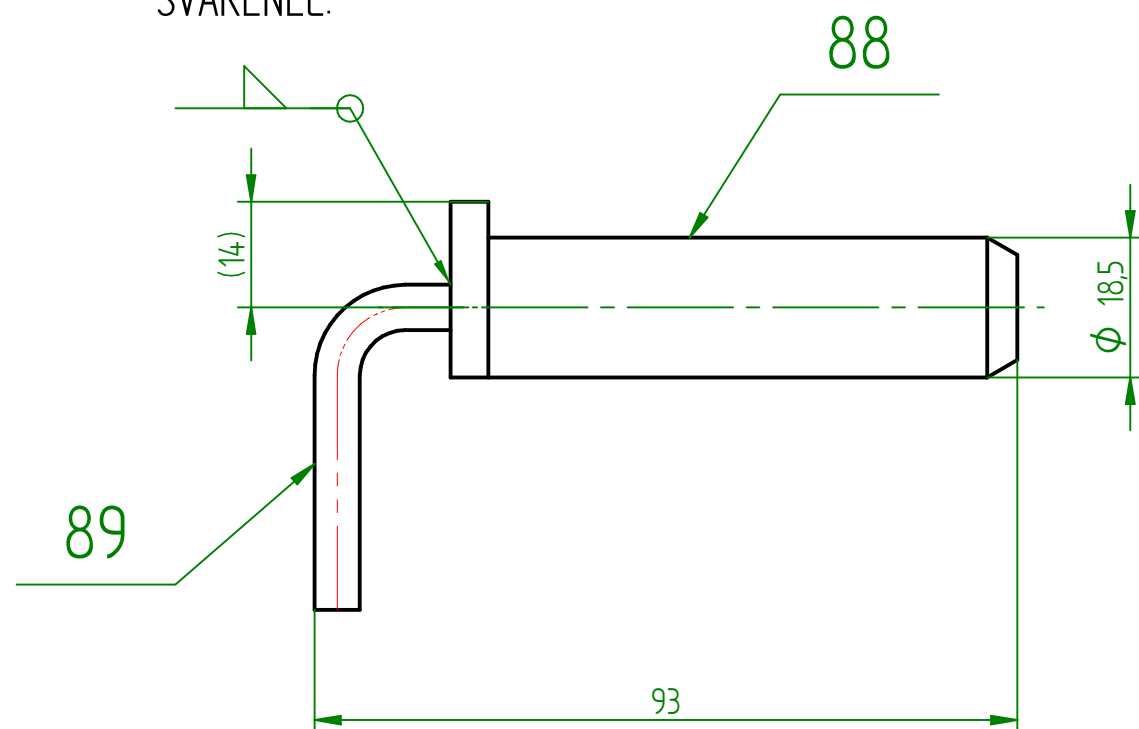


Index		Změna		Datum		Podpis		VOP CZ NOVÝ JICIN			
Material		Rozměr			Hmotnost v kg		3,9	Meritko		1:X	
C. v. sestavy		15296			Poz.		81	Kusovník		ODDELENY	
Vypracoval DREISEITL M.					Poznámka		Starý výkres		Listu 2		
Kontroloval									List 1		
Schválil		Datum 23.7.2014									
Název					VÝZTUHA BOČNÍ L, P						
					15296-07						

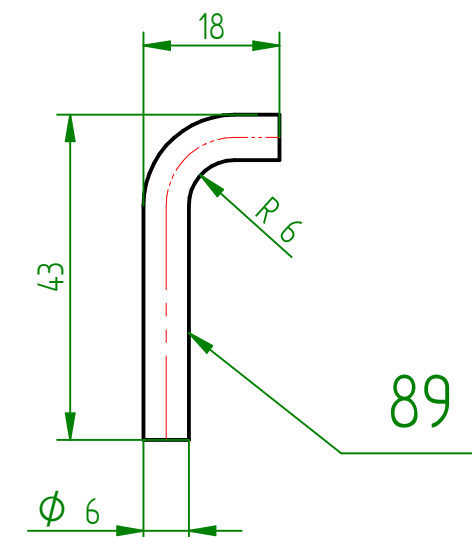
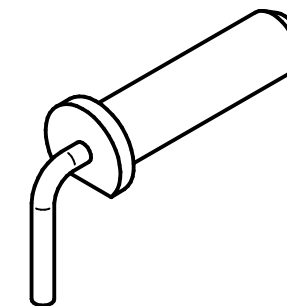


Index		Zmena		Datum		Podpis		VOP CZ NOVY JICIN		
Material			Rozmer			Hmotnost v kg 3,9		Meritko		
						C. v. sestavy 15296		Poz. 81		
Vypracoval DREISEITL M.								1:X		
Kontroloval								Kusovník		
Schválil			Datum 23.7.2014			Poznámka		ODDELENY		
Nazev			VÝZTUHA BOČNÍ L, P			15296-07		Stary vykres		
								Listu 2		
								List 2		

SVAŘENEC:



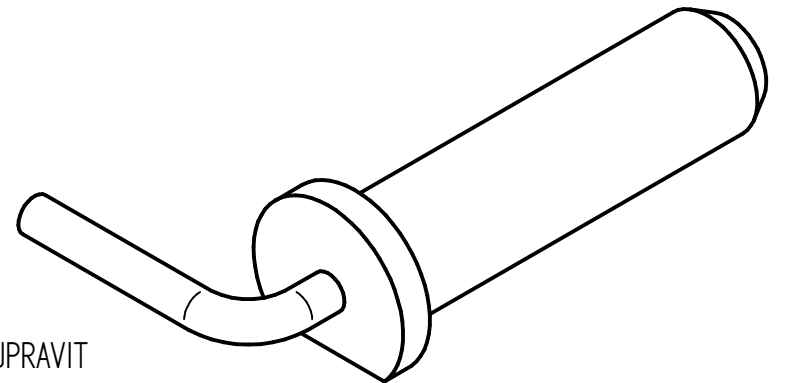
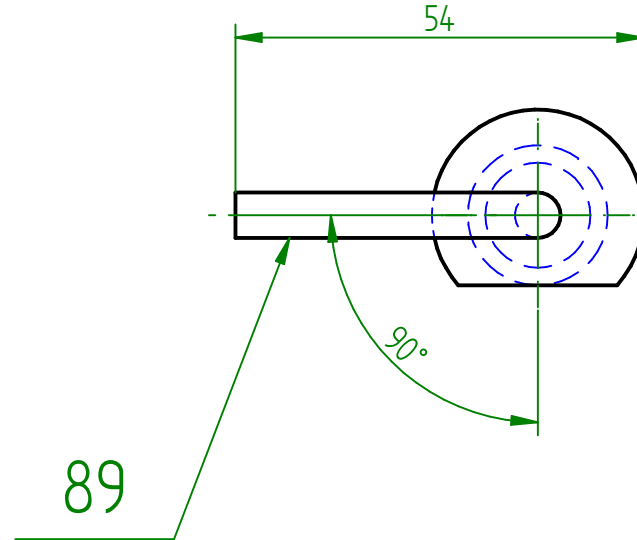
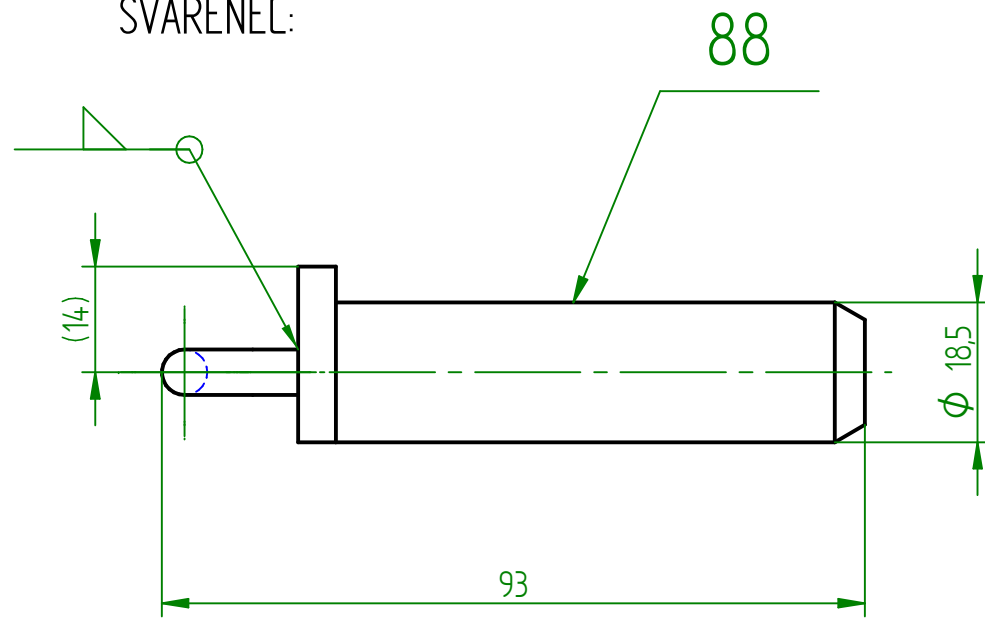
ISO POHLED
(1:2)



SVARIT 3K, 3V, PLOCHY PRO "V" SVARY UPRAVIT
ZINKOVAT DLE DIN 50961 - Fe/Zn 8 B

Index	Změna	Datum	Podpis	VOP CZ NOVY JICIN			
Material		Rozmer		Hmotnost v kg	0,18	Meritko	
Vypracoval DREISEITL M.		Kontroloval		C. v. sestavy	15296	Poz.	87
Schválil		Datum		Poznámka		Stary vykres	
Název		ČEP 01		15296-08		Listu	
						List	

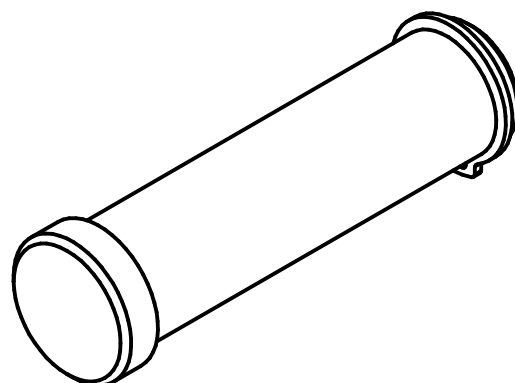
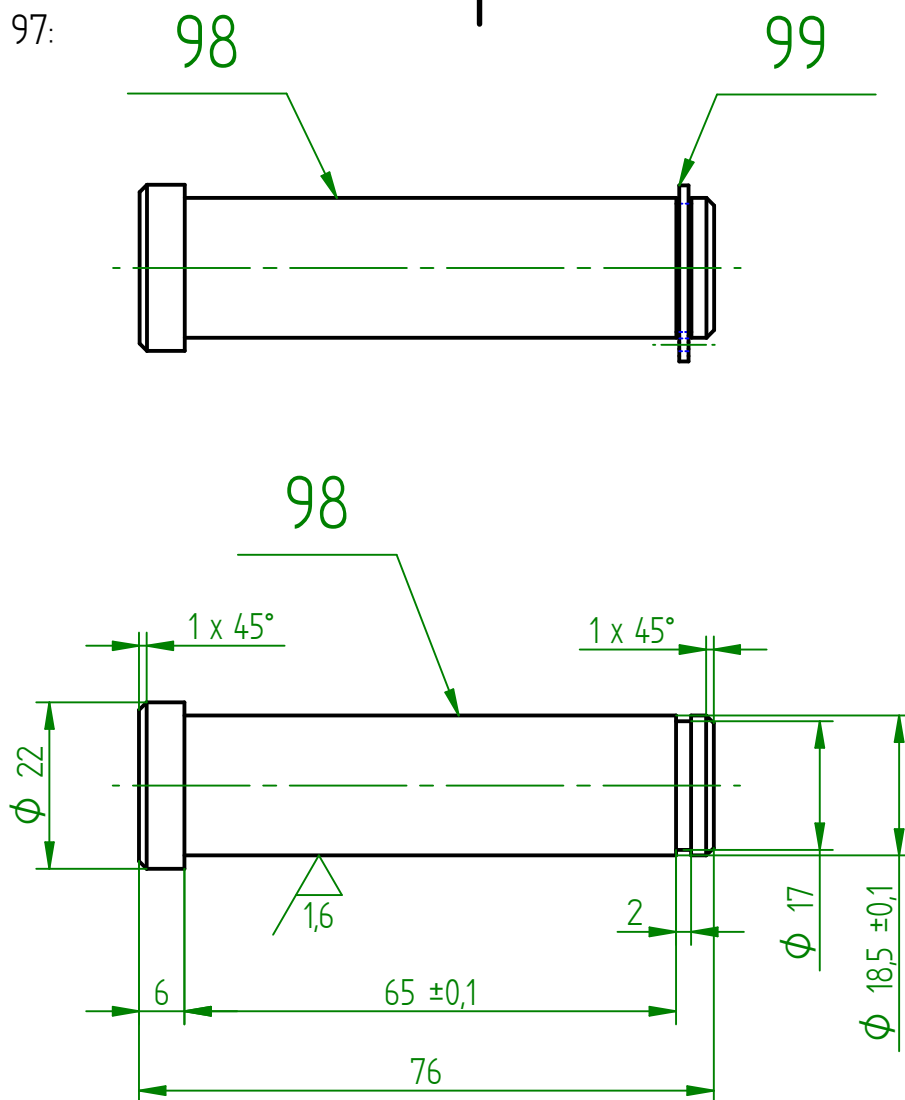
SVAŘENEC:



SVARIT 3K, 3V, PLOCHY PRO "V" SVARY UPRAVIT
ZINKOVAT DLE DIN 50961 - Fe/Zn 8 B

Index		Zmena		Datum		Podpis		VOP CZ NOVY JICIN	
Material			Rozmer			Hmotnost v kg 0,18		Meritko 1:1	
						C. v. sestavy 15296	Poz. 93		
Vypracoval DREISEITL M.								Kusovník ODDELENY	
Kontroloval									
Schválil			Datum 23.7.2014			Poznámka		Starý výkres	
Název ČEP 02						15296-09			Listu List

POZICE 97:



ZINKOVAT DLE DIN 50961 - Fe/Zn 8 B

Index	Zmena	Datum	Podpis	VOP CZ NOVY JICIN	
Material	Rozmer	Hmotnost v kg 0,17		Meritko 1:1	
Material	Rozmer	C. v. sestavy 15296		Poz. 97	Kusovník ODDELENY
Vypracoval DREISEITL M.		Datum 23.7.2014		Poznámka	Stary vykres
Kontroloval					
Schválil					
Název	ČEP 03			15296-10	
				Listu	List